



Discovering copper under cover in the Chilean Coastal IOCG Belt

CORPORATE PRESENTATION — JANUARY 2025

TSXV: **TRBC**

Forward Looking Statements and Disclaimer

This corporate presentation and the information contained herein (the "Presentation") is proprietary and for authorized use only. It is being provided for the use of prospective investors with the express understanding that, without the prior permission in writing from Tribeca Resources Corporation (the "Company"), the investor will not copy this Presentation or any portion of it or use any information contained herein for any purpose other than evaluating a potential investment in securities of the Company.

This Presentation provides general background information about the activities of the Company. Information disclosed in this Presentation is current as of August 29, 2023, except as otherwise provided herein and the Company does not undertake or agree to update this Presentation after the date hereof. All information is derived solely from management of the Company and otherwise publicly available third-party information that has not been independently verified by the Company. Further, it does not purport to be complete nor is it intended to be relied upon as advice (legal, financial, tax or otherwise) to current or potential investors. Each prospective investor should contact his, her or its own legal adviser, independent financial adviser or tax adviser for legal, financial or tax advice. Recipients of this Presentation who are considering acquiring securities of the Company are referred to the public filings made by the Company with Canadian securities regulatory authorities, which are available under the Company's SEDAR profile at www.sedar.com.

This Presentation contains forward-looking statements or forward-looking information under applicable Canadian securities laws (hereinafter collectively referred to as "forward-looking statements") concerning the Company's plans for its properties and mineral projects, financial results, operations and other matters. Any statements that express or involve discussions with respect to predictions, expectations, beliefs, plans, projections, objectives, assumptions or future events or performance are not statements of fact and may be forward-looking statements. Such forward-looking statements are made as of the date of this Presentation or as of the date of the effective date of information described in this Presentation, as applicable.

Further, these forward-looking statements reflect management's current views and are based on certain expectations, estimates and assumptions which may prove to be incorrect. A number of risks and uncertainties could cause the Company's actual results to differ materially from those expressed or implied by the forward-looking statements. Factors that could cause actual results to differ materially from those anticipated in these forward-looking statements are described under the caption "Risk Factors" in the Filing Statement of the Company dated as of October 24, 2022 which is available for view under the Company's profile on SEDAR at www.sedar.com.

Although the Company has attempted to identify important factors that could cause actual results to differ materially from those contained in forward-looking statements, there may be other factors that cause results not to be as anticipated, estimated or intended. There can be no assurance that such information will prove to be accurate, as actual results and future events could differ materially from those anticipated in such information. Accordingly, readers should not place undue reliance on forward-looking statements contained in this Presentation or in certain of the other documents on file with Canadian securities regulatory authorities, which are available on the Company's SEDAR profile at www.sedar.com. The Company and its directors, officers and employees each disclaim any obligation to update any forward-looking statements, whether as a result of new information, future events or results or otherwise, except as required by applicable law. Accordingly, readers should not place undue reliance on forward-looking statements due to the inherent uncertainty therein. All forward-looking statements are expressly qualified in their entirety by this cautionary statement.

An investor should read this Presentation with the understanding that the Company's actual future results may be materially different from what is expected.

This Presentation also contains or references certain industry and peer group data which is based upon information from independent industry publications and other publicly available sources. Although the Company believes these sources to be generally reliable, such information is subject to interpretation and cannot be verified with complete certainty due to limits on the availability and reliability of raw data, the voluntary nature of the data gathering process and other inherent limitations and uncertainties. The Company has not independently verified any of the data from third party sources referred to in this Presentation and accordingly, the accuracy and completeness of such data is not guaranteed.

Technical aspects of this Presentation have been reviewed and approved by Paul Gow, a designated Qualified Person (QP) under National Instrument 43-101.

This document is not an offer of securities for sale in the United States or in any other jurisdiction. The securities of the Company have not been and will not be registered under the United States Securities Act of 1933, as amended (the "U.S. Securities Act") or any state securities laws and may not be offered and sold in the United States except pursuant to an exemption from the registration requirements of the U.S. Securities Act.

This Presentation includes historical results from exploration activities conducted by other parties and taken from various sources. The Company has not undertaken any independent investigation of the sampling, nor has it independently analyzed the results of the historical exploration work in order to verify the results. The Company considers this historical data to be relevant as the Company will use this data as a guide to plan future exploration programs. The Company also considers the data to be reliable for these purposes, however, the Company's future exploration work will include verification of the data through drilling.

Additional information concerning the Company's La Higuera IOCG Project is included in the technical report titled: Independent NI 43-101 Technical Report on the La Higuera IOCG Project, a copy of which is available under the Company's SEDAR profile at www.sedar.com.

No securities regulatory authority or regulator has reviewed this document. Any representation to the contrary is an offence.

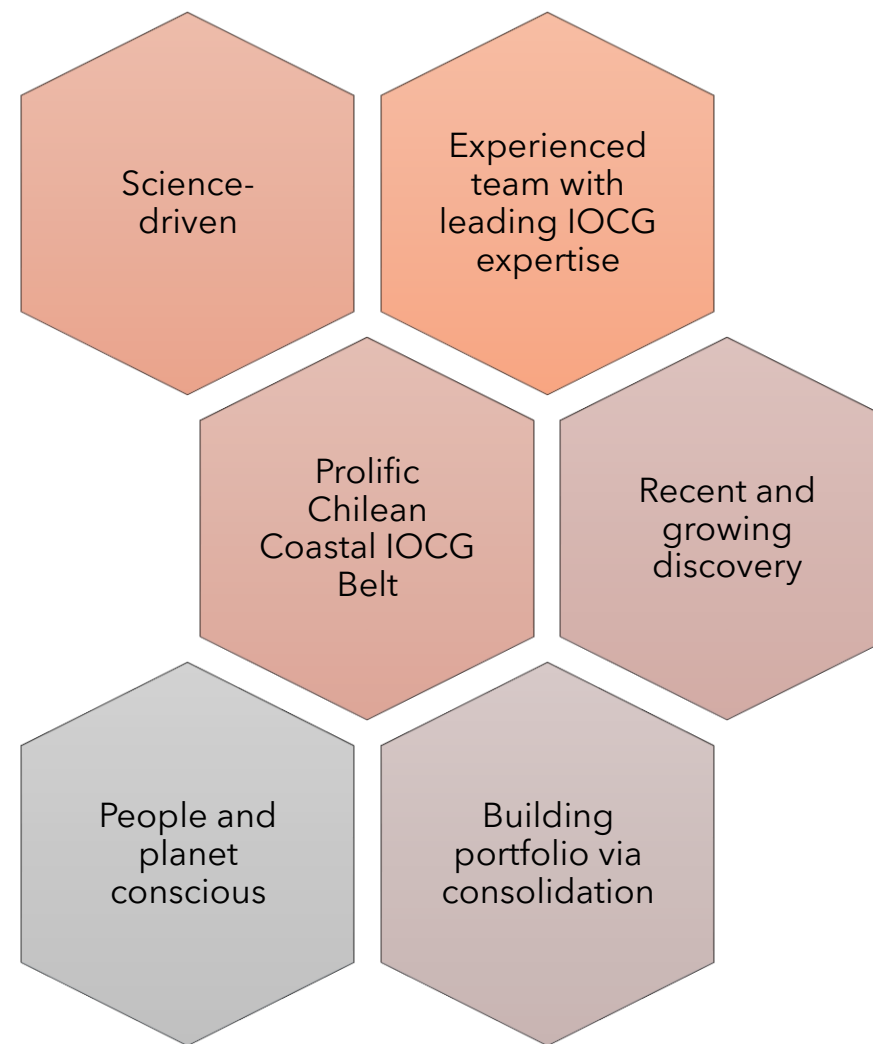


A geological hammer is positioned vertically on the left side of the image, resting on a rock surface. The rock face is highly textured and colorful, showing various mineral veins and patterns in shades of brown, green, blue, and purple. The hammer has a dark handle and a metallic head with a flat striking face and a pointed pick. The background is a close-up of the rock surface, showing intricate mineral structures.

Introduction to Tribeca Resources



We are a **copper exploration** company focused on discovering and developing **future mines** in the **Chilean Coastal IOCG belt**



Tribeca Snapshot



CAPITAL STRUCTURE

Share Price (10-Jan-2025)	C\$0.28
Shares Outstanding (# shares)	66.53M
Warrants (# warrants)	5.32M
Options (# options)	1.25M
Fully Diluted (# shares)	73.10M
Market Capitalization (Undiluted)	C\$18.6M
Cash (30-Sep-2024)	C\$2.1M
Debt	Debt Free
Enterprise value (Undiluted)	C\$16.5M

KEY ASSETS

La Higuera	Advanced exploration
Chiricuto	Undrilled geophysical target

MANAGEMENT & BOARD

Dr. Paul Gow	CEO, Director
Thomas Schmidt	President, Director
Nick DeMare	CFO & Corporate Secretary, Director

INDEPENDENT DIRECTORS

Luis Tondo	Director
Derrick Weyrauch	Director

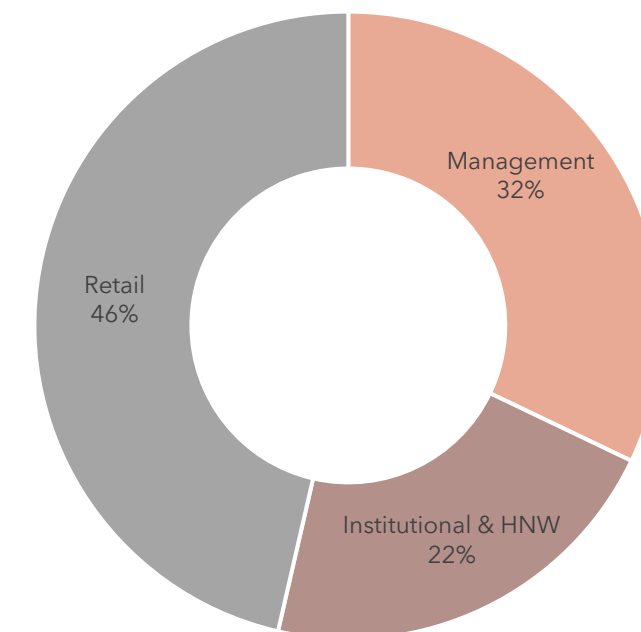
BEST DRILL INTERSECTIONS AT GABY¹

GBY001	268m at 0.66% Cu and 0.14g/t Au in first hole
GBY007	264m at 0.31% Cu, 0.06g/t Au in 500m step-out hole
GBY008	224m at 0.31% Cu + 0.06 g.t Au in 50m step-back from GBY001
RCHLH07	285m at 0.40% Cu and 0.08g/t Au in best historic drill hole

¹ Gaby is one of five identified drill targets at the La Higuera IOCG Project

SHAREHOLDERS

% undiluted



Track-record in Latam copper, exploration and M&A



Management / Co-founders



Dr. Paul Gow CEO, Director

- Geologist with doctorate and 25+ years' experience in mineral exploration and project development.
- World-leading expertise with iron oxide copper-gold (IOCG) deposits - led exploration and development programs in all four major IOCG provinces.
- GM of Xstrata Copper's Frieda River project and Director Brazil Exploration
- Led Pedra Branca discovery team - now in production

Thomas Schmidt President, Director

- M&A professional with 20+ years experience; strong focus on Latin America.
- Joined Xstrata's M&A team in London in 2003
- Banking and private equity experience with JP Morgan (Associate) and Barclays (VP)
- Xstrata GM Finance with responsibility for Collahuasi and Antamina copper mine JVs in Chile and Peru



Directors & corporate



Luis Tondo Director

- Mining Engineer with extensive operating background with majors and juniors in Latam
- Former CEO & Director at Marimaca Copper (TSX)
- Previously with Kinross Gold, Rio Tinto

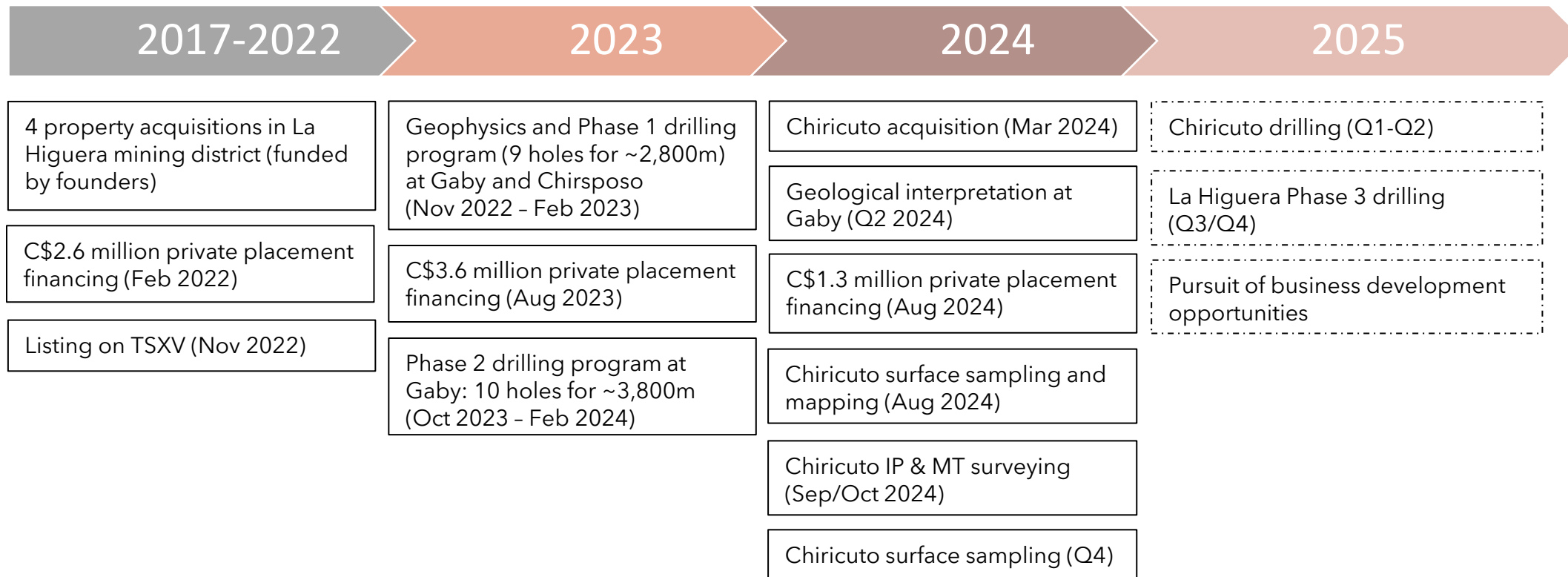
Derrick Weyrauch Director

- CPA with finance, M&A, risk management, corporate restructuring and turnaround experience
- CEO & Director of Palladium One Mining; Chairman of Nortec Minerals
- Co-founder and former director of Magna Mining. Past director of Cabral Gold, Eco Oro Minerals, Jaguar Mining and Banro

Nick DeMare CFO, Corp Secretary & Director

- CPA; president and principal of Chase Management Ltd., a provider services to listed growth companies
- Current or former director and/or officer several TSX and TSXV listed companies including Mirasol Resources, Tinka Resources, Mawson Gold

Milestones and upcoming catalysts



Key:

Completed activities

Proposed activities

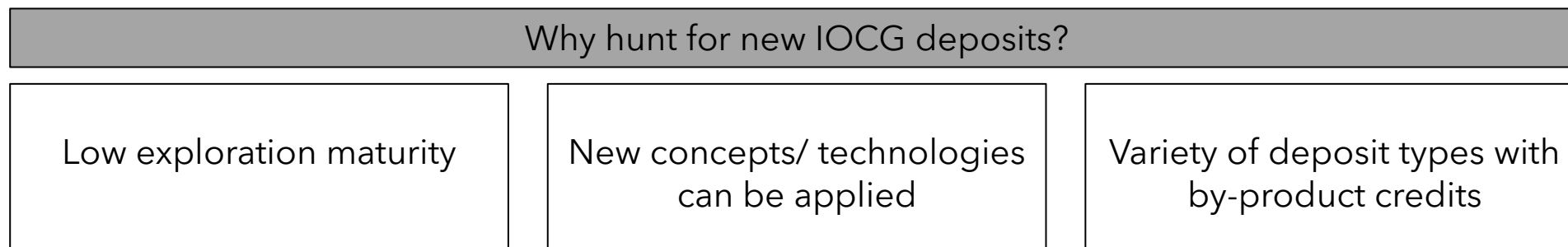
A geological hammer is positioned vertically on the left side of the image, resting on a rock surface. The hammer has a dark handle and a metal head with a flat top and a pointed end. The rock surface is textured and shows various colors, including shades of brown, green, and grey, indicating different geological layers or mineral deposits. The text "Our approach" is overlaid in the center of the image in a white, sans-serif font.





Our approach



TRIBECA
RESOURCES

New approaches are unlocking IOCG opportunities



Major Global IOCG Belts	Giant Deposits	Resource*	Company
1. Gawler Craton (Australia)	Olympic Dam	9.1 Bt @ 0.87% Cu, 0.31 g/t Au, 0.28 kg/t U	
2. Carajás district (Brazil)	Salobo	0.99 Bt @ 0.82% Cu, 0.49 g/t Au	
3. Coastal IOCG Belt (Chile/Peru)	Candelaria	1.2 Bt @ 0.60% Cu, 0.13 g/t Au, 2.0 g/t Ag	
4. Cloncurry district (Australia)	Ernest Henry	166 Mt @ 1.1% Cu, 0.54 g/t Au	

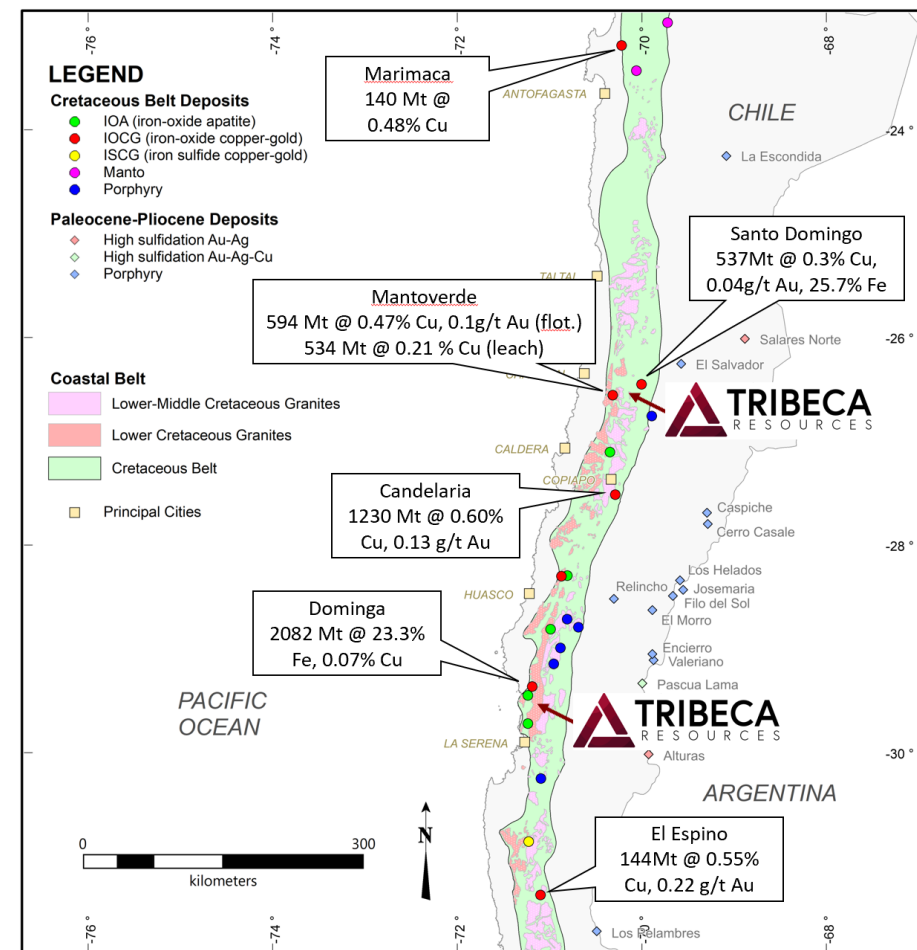
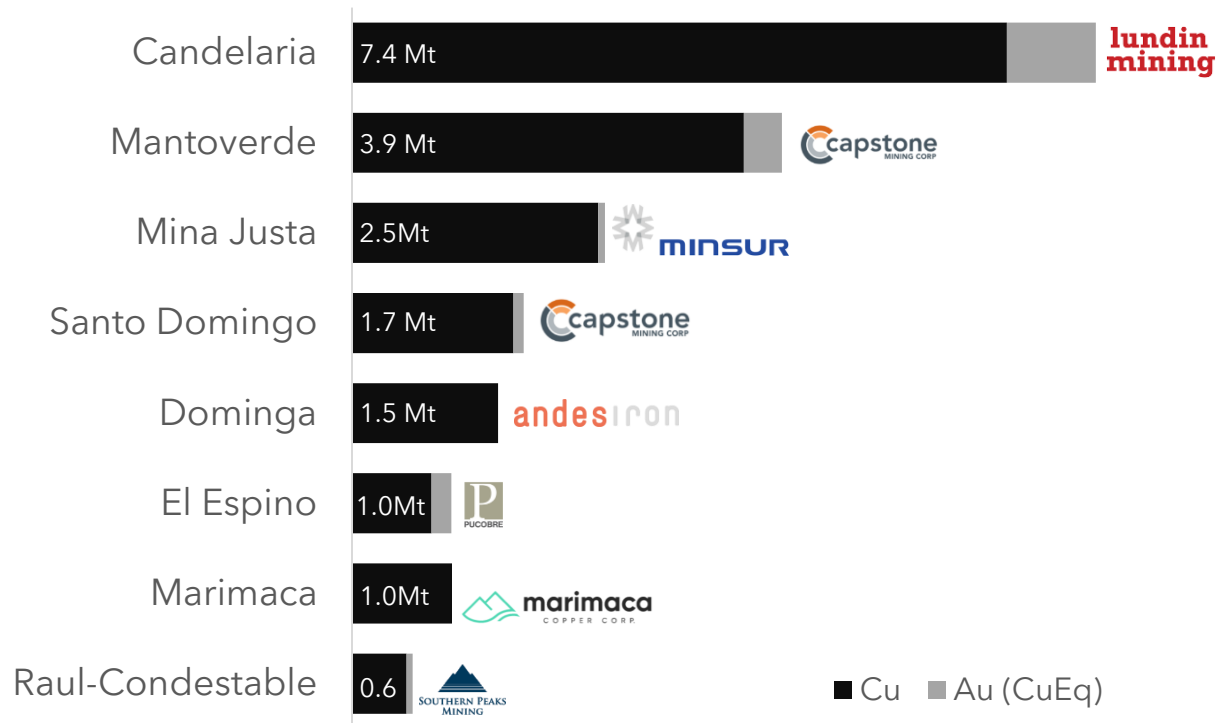
* Tonnage and grade figures for the deposits sourced as follows: Olympic Dam (Total Resource, Primary Industries and Resources SA, Government of South Australia, Fact Sheet, 2010), Salobo (Proven and Probable Reserves; Salobo copper-gold mine, Carajás, Pará state, Brazil, Technical Report for Wheaton Precious Metals, 2017), Candelaria (Measured, Indicated and Inferred Mineral Resources, NI 43-101 compliant; refer to Lundin 2022 Mineral Resource and Mineral Reserves Estimates Statement News Release dated 8 February 2023), Ernest Henry (Total Mineral Resource pre-mining, Ryan, A.J. in AusIMM Geology of Australian and Papua New Guinean Mineral Deposits, 1998)

Chilean Coastal IOCG Belt is ripe for discovery

Key regional advantages 1) infrastructure-rich 2) low altitude 3) access to sea water
4) under-explored with historic focus on outcropping areas

6 major Chilean Coastal IOCG Belt deposits
(within the ~1,000 km N-S area Tribeca is focussed on)

Significant Chile/Peru Coastal IOCG Belt deposits contained copper equivalent* (Mt)



* Copper and gold only; silver often present but not always reported; iron and cobalt (where present) are subject to separate beneficiation route, thus excluded
Source: company disclosures

Our strategy: science-led, portfolio driven exploration

Differentiated from the all-or-nothing, single-asset, high-G&A junior template”

Seeking superior risk-adjusted returns by bringing a science-led approach to exploration & discovery in the Chilean Coastal IOCG belt

Portfolio Approach

Actively managed & balanced
Dynamic capital allocation; recycle capital
G&A expense efficiencies

Disciplined Growth

Coastal IOCG Belt consolidation
Overlooked and/or misunderstood properties
Long-dated options

Initial project: La Higuera

Strike length doubled at Gaby target via two drill programmes
Outstanding early drill results
Moving on to test additional targets

Project addition: Chiricuto

Rare undrilled geophysical anomaly
Pre-drilling activities planned

A geological hammer is positioned vertically on the left side of the image, resting on a rock surface. The hammer has a dark handle and a metal head with a flat top and a pointed end. The rock surface is highly textured and colorful, showing various shades of brown, green, and blue, likely due to mineral deposits or weathering. The text "Chiricuto Project" is overlaid in the center of the image in a white, sans-serif font.

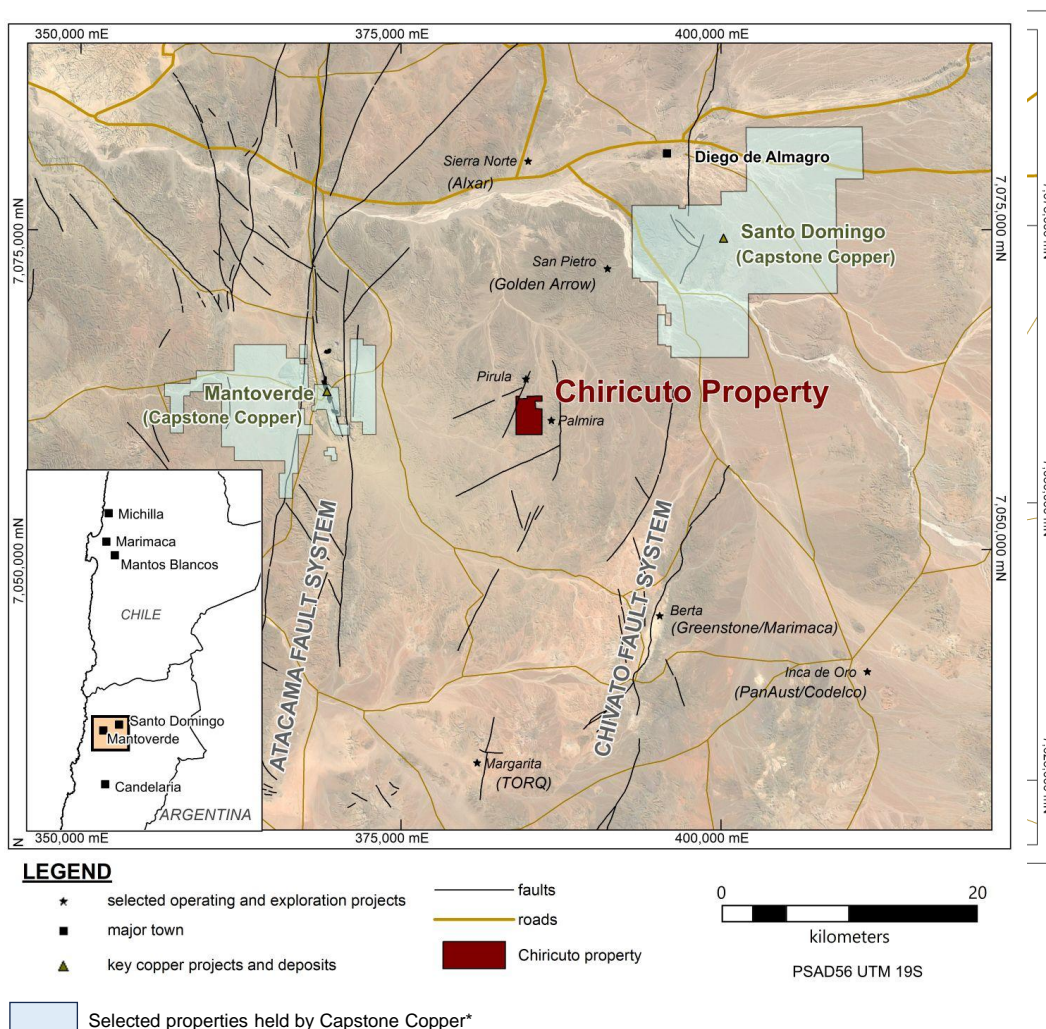
Chiricuto Project



TRIBECA
RESOURCES

Chiricuto Project

A rare undrilled geophysical target in the Capstone dominated Mantoverde district



- 5-year purchase option secured March 2024
 - Option to acquire a 100% interest
 - Low up-front cost and low on-going commitments
 - Purchase price of US\$1-10 million; tied to size of maiden Inferred resource defined in target area
 - Tribeca to deliver Inferred Mineral Resource Estimate and drill at least 3,000 metres into main geophysical target prior to option exercise
 - Option extendable to 6 years
 - 0.5% NSR royalty (no buy-back)
 - Tribeca is the operator during option period

*Selected properties held in the names of Minera Santo Domingo SCM and Mantoverde S.A.

Source: Catastro Sernageomin online

See also: (page 125): <https://capstonecopper.com/wp-content/uploads/2023/01/SD-Technical-Report-Final-Feb-19-2020.pdf>

Chiricuto Project

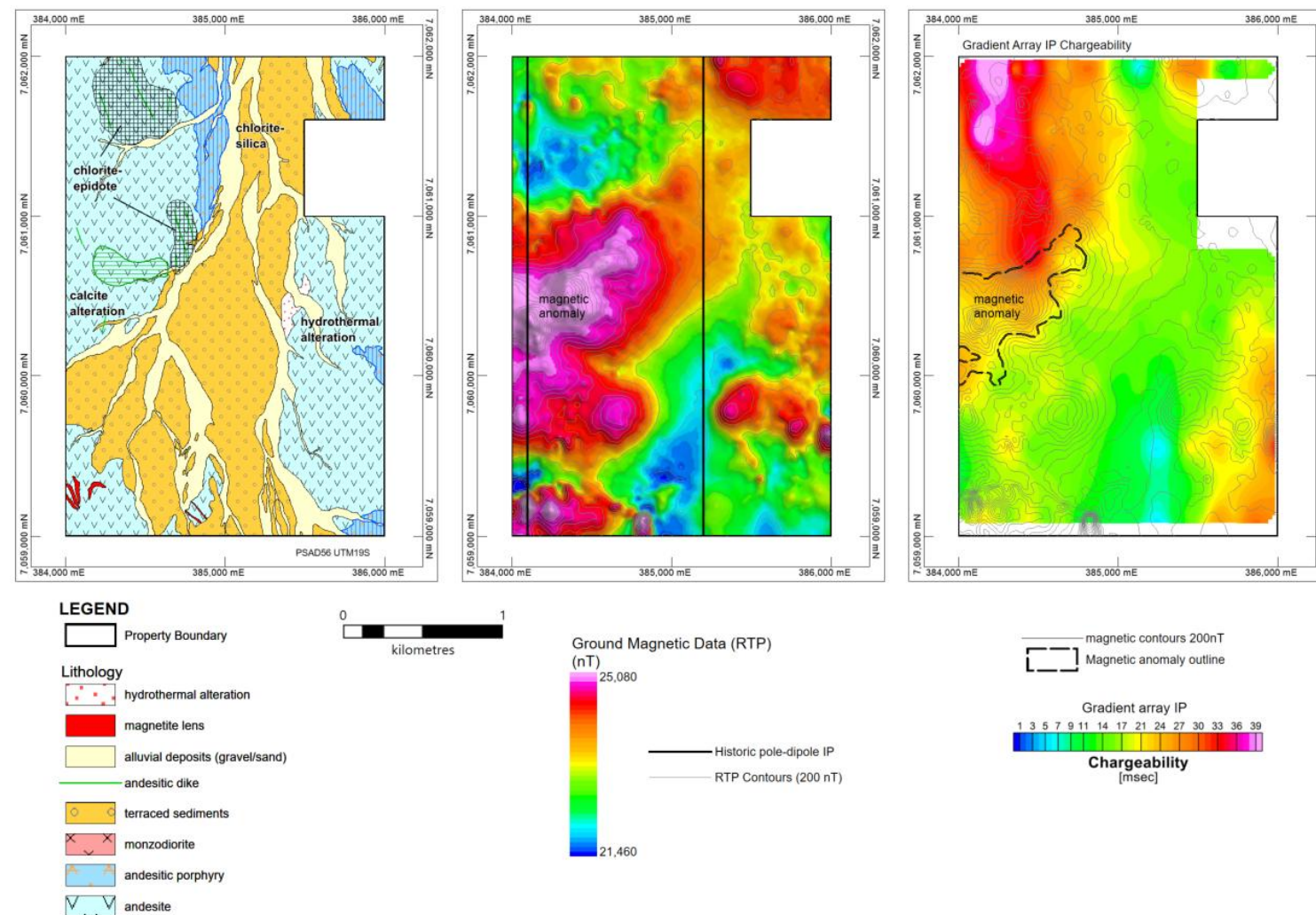
A rare undrilled geophysical target in the Capstone dominated Mantoverde district (cont'd)

Project highlights

- 570 hectares; 15km from Mantoverde (Capstone)
- Located within andesite-dominated lower unit of Middle-Upper Jurassic La Negra Formation (same rock unit hosting Mantoverde deposit)
- Under interpreted thin alluvial or colluvial gravel cover, with outcrop locally present. Hosts several small copper or iron workings and pits.
- Ground magnetic data suggests the magnetite alteration is widespread, with high intensity anomalies up to 3000nT
- Year-round access
- State land, no need to negotiate access with private land owners
- Initial IP completed by original owners in April 2023

Tribeca work completed and planned

- Geological mapping and rock chip sampling completed (Q3 2024)
- Gradient array IP and MT completed over licence area (Q3 2024)
- Soil sampling completed over targets (Q4 2024)
- Drilling planned (1,500m) for Q1 2025

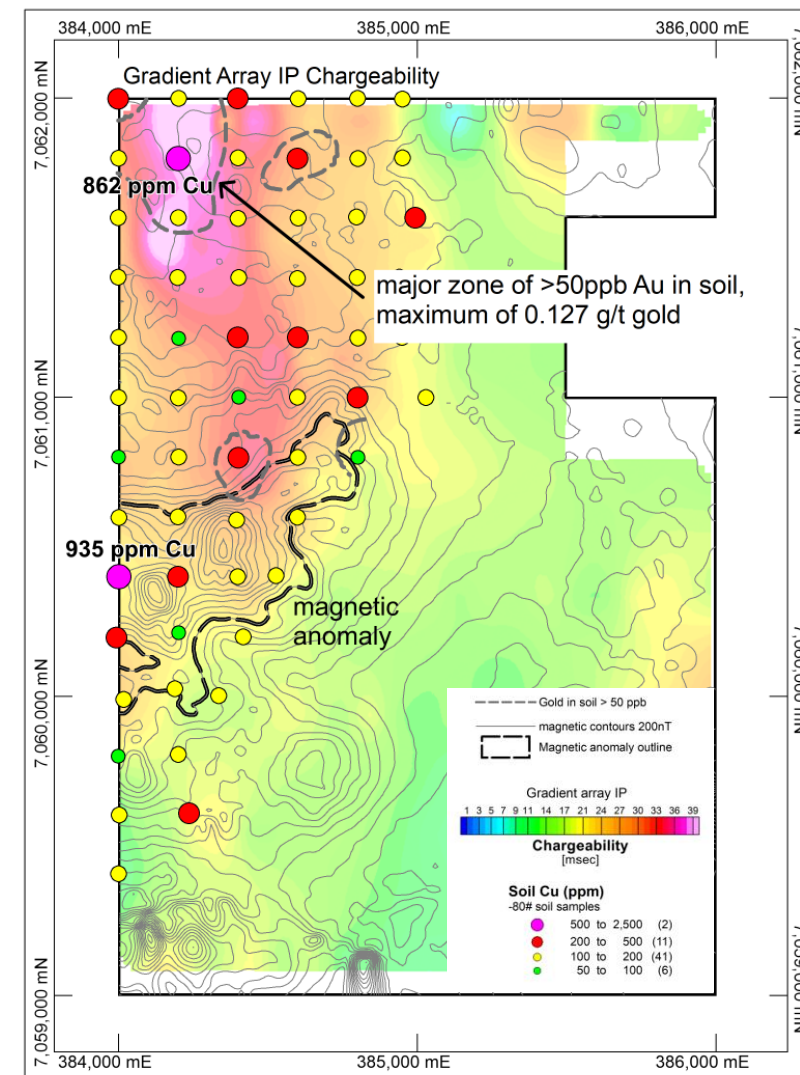
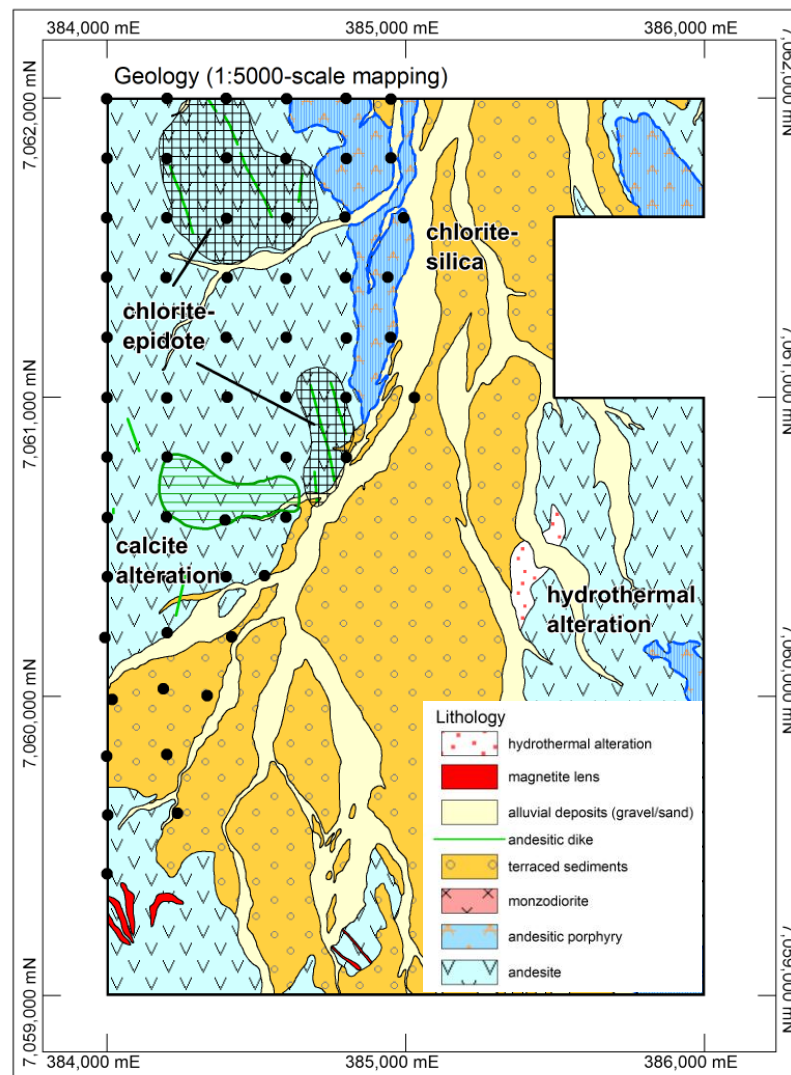
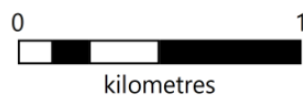


Chiricuto Project

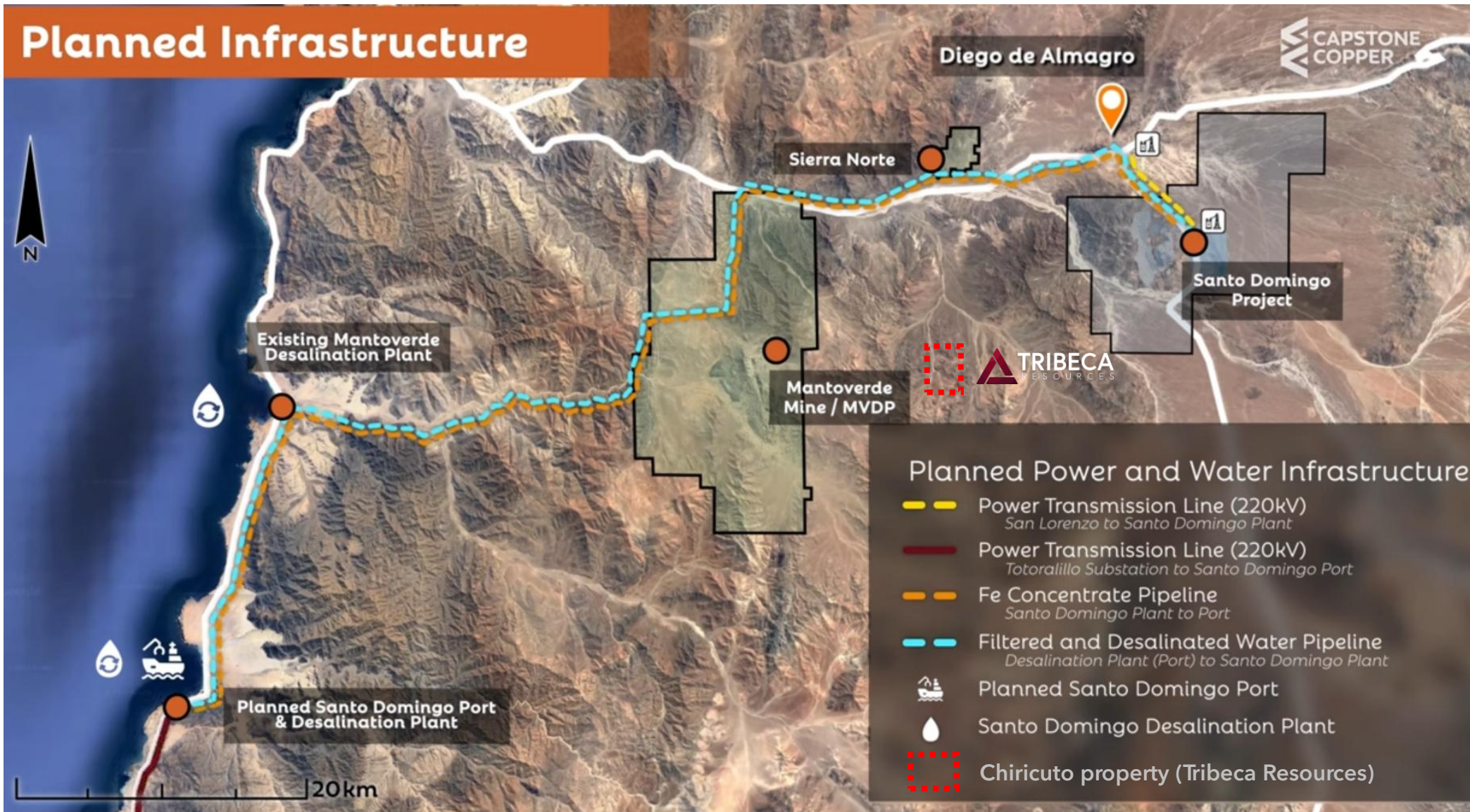
Soil survey results provide geochemical support for geophysical targets

Soil results

- Highest copper ***coincident with geophysical targets***
- ***Very high gold results*** with two samples > 0.1 g/t Au coincident with large IP anomaly.



Chiricuto is located in an infrastructure rich district



Source: Capstone video - "Updated Santo Domingo Feasibility Study - Building a World Class District in Chile" (1 August 2024)

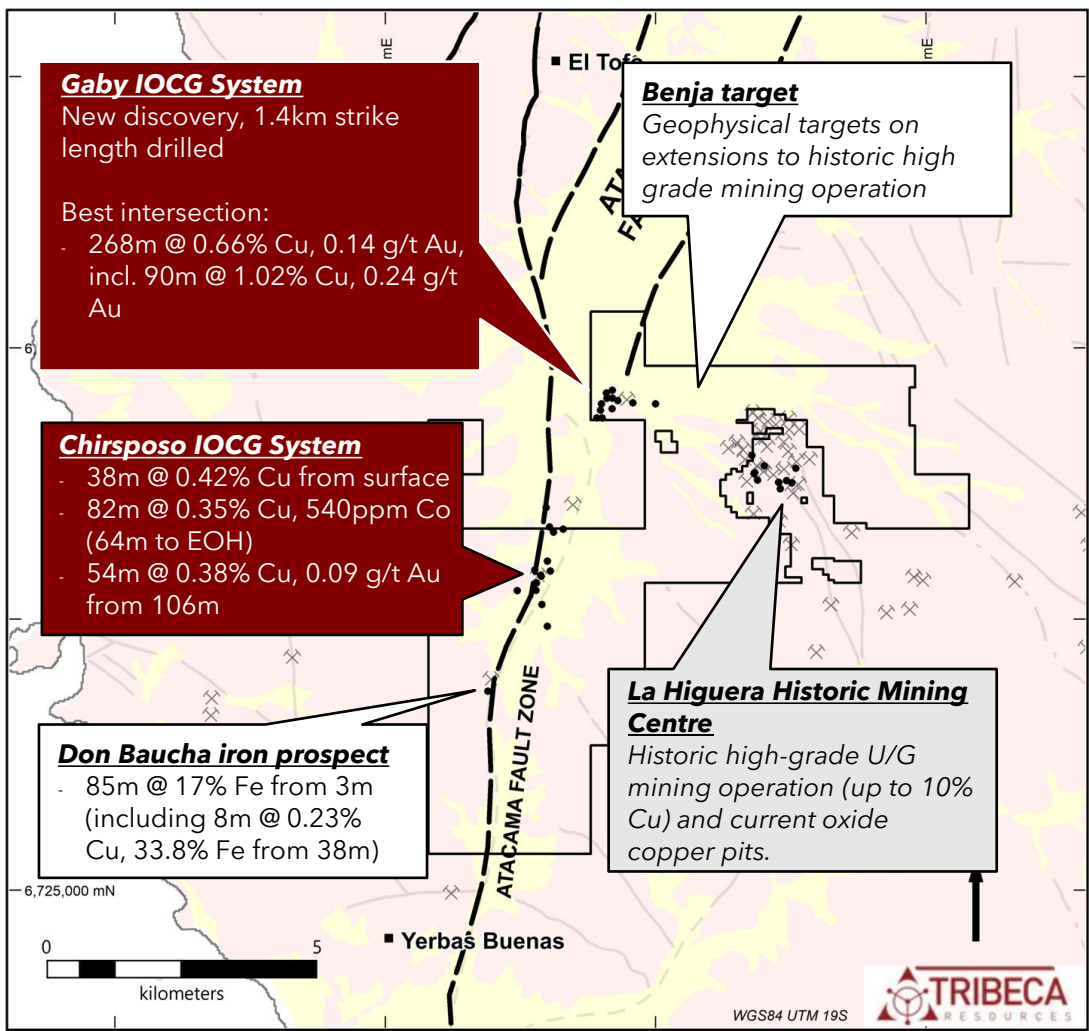


La Higuera
IOCG Project



TRIBECA
RESOURCES

La Higuera IOCG Project: Overview



- Located 500km north of Santiago
- **Two drilled IOCG mineralized systems** (13,300m of drilling and metallurgical test work)
- **Numerous additional targets** defined by historic, magnetic and IP geophysical surveying
- 7km strike length of **Atacama Fault Zone**
- Concentrated **infrastructure** within 10km of project:
 - Main north-south transmission line
 - Pan American highway
 - Proposed port & desalination plant (Andes Iron)
 - High speed mobile communications coverage
 - Two existing industrial ports 40km to south

Summary Geology	Initial drill programs	Legend	
 Cenozoic Cover	 Subsequent targets	• drill hole	— fault
 Outcrop	 Third party	× mineral occurrence	■ iron deposit

La Higuera IOCG project: Exploration programs

Drill testing of two targets under cover completed: Gaby and Chirsposo

Phase 1 Program: Completed Q1 2023

- ✓ Geophysics (gravity, ground magnetics)
- ✓ 2,750m RC and diamond Phase 1 drilling

Surface Work: Completed Q4 2023

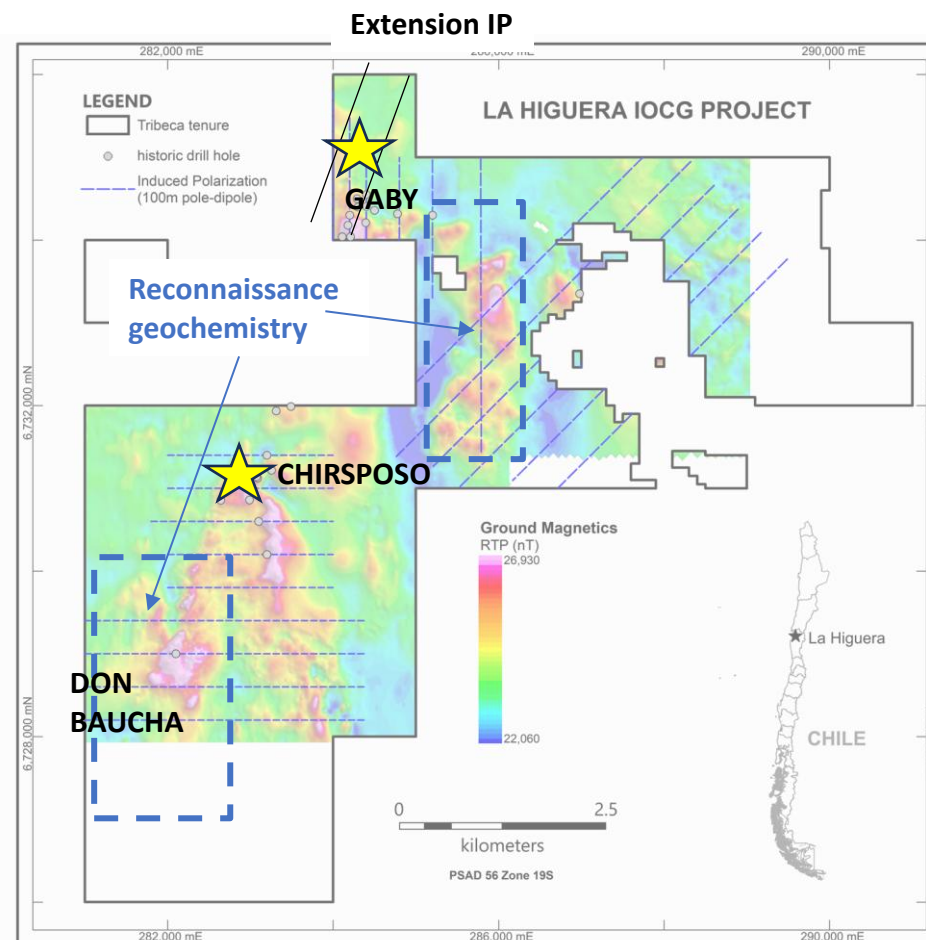
- ✓ Extension IP at northern Gaby area
- ✓ Reconnaissance surface soil geochemistry

Phase 2 Program: Completed Q1 2024

- ✓ Approx 3,800m of drilling undertaken at Gaby
- ✓ 10 drill holes completed during Oct '23 - Feb '24

Phase 3 Program: Planning underway

- ✓ Follow-up drilling at Gaby, Chirsposo Sur and Don Baucha



La Higuera Project Targets

Five targets in total (two drill-tested to date)

Gaby (29 holes for 10,118 metres drilled):

- Mineralized system of 1.4km, open with depth, additional geophysical targets exist

Benja (undrilled):

- Magnetic complex with coincident variable intensity chargeability anomalism. Mapping and surface geochemistry planned.

Chirsoipo (16 holes for 2,902 metres drilled):

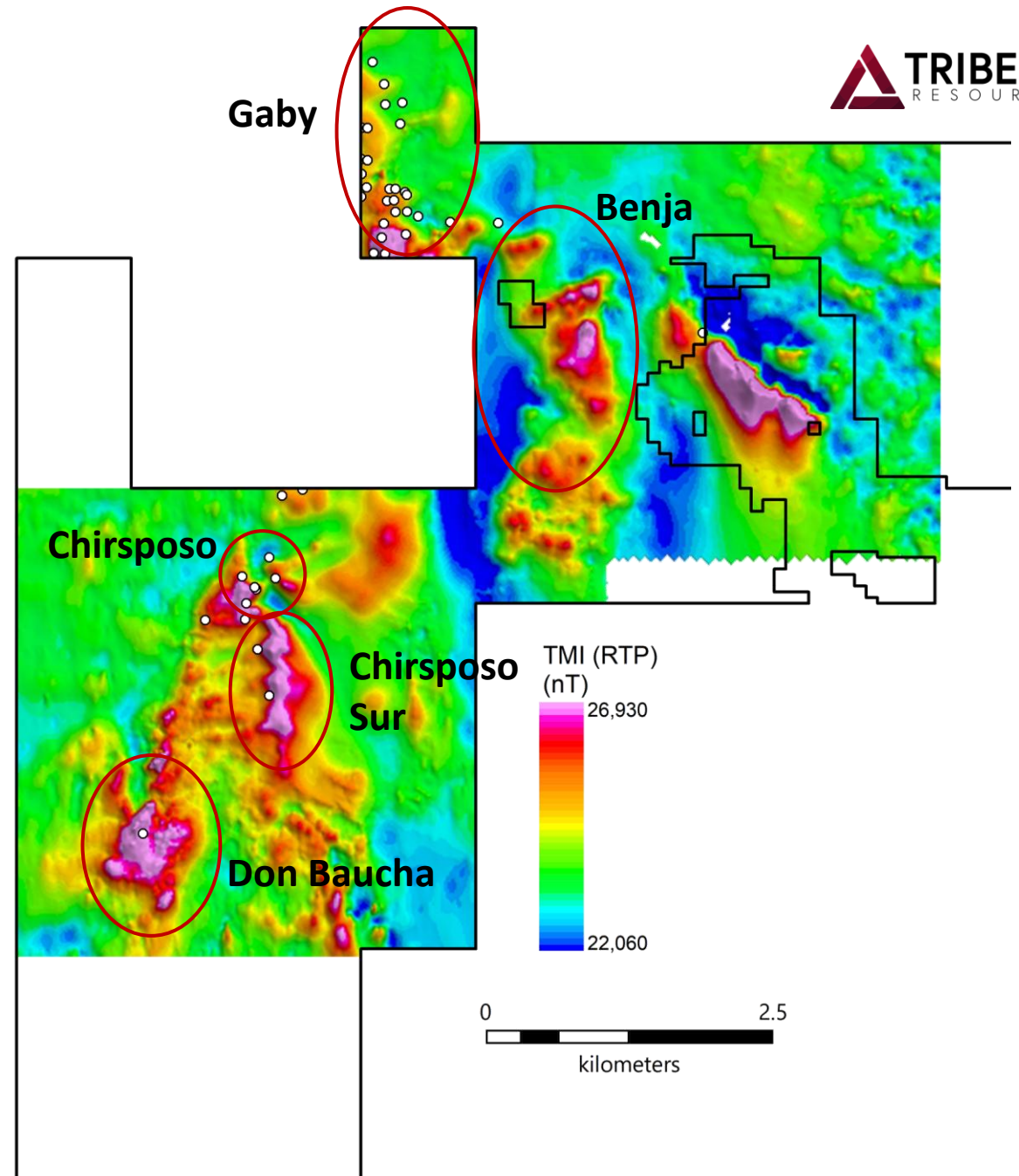
- Significant thicknesses of 0.2-0.4% Cu

Chirsoipo Sur (undrilled):

- String of magnetic anomalies along N-S structure, historic drilling on flanks yielded intermittent 0.1% Cu (maximum individual assay of 0.8% Cu)

Don Baucha (1 hole):

- Large 1km diameter high intensity magnetic anomaly, known IOCG alteration, single vertical hole intersected 8m @ 0.23% Cu.

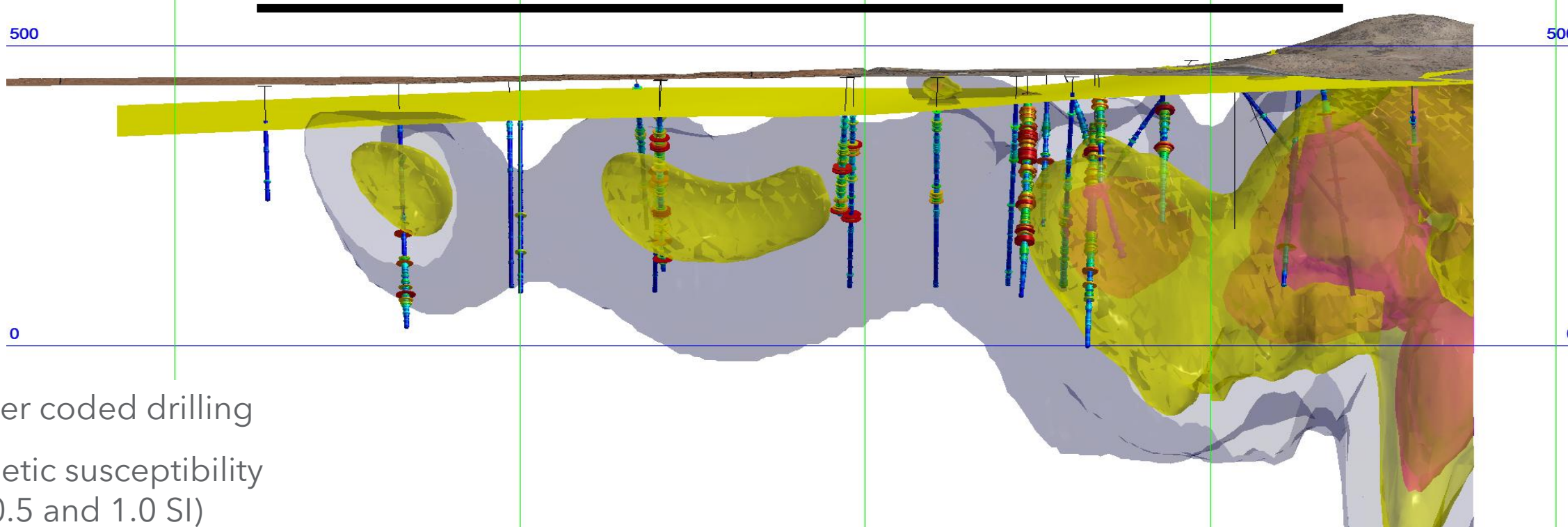


Gaby IOCG discovery (2023)

NORTH

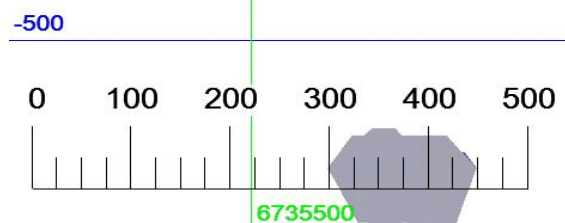
1.4 KILOMETRES

SOUTH



Copper coded drilling
Magnetic susceptibility
(0.1, 0.5 and 1.0 SI)

- RCH-LH-07** - 285m @ 0.40% copper, 0.08 g/t gold *incl. 56m at 0.60% copper, 0.12 g/t gold (historic intersection)*
- GBY001** - 268m at 0.66% copper, 0.14 g/t gold *incl. 90m at 1.02% copper and 0.23 g/t gold*
- GBY006** - 186.7m @ 0.27% copper, 0.05 g/t gold (to EOH) *incl. 26m at 0.51% copper, 0.10 g/t gold*
- GBY007** - 264m @ 0.31% copper, 0.06 g/t gold *incl. 44m @ 0.52% copper, 0.10 g/t gold*



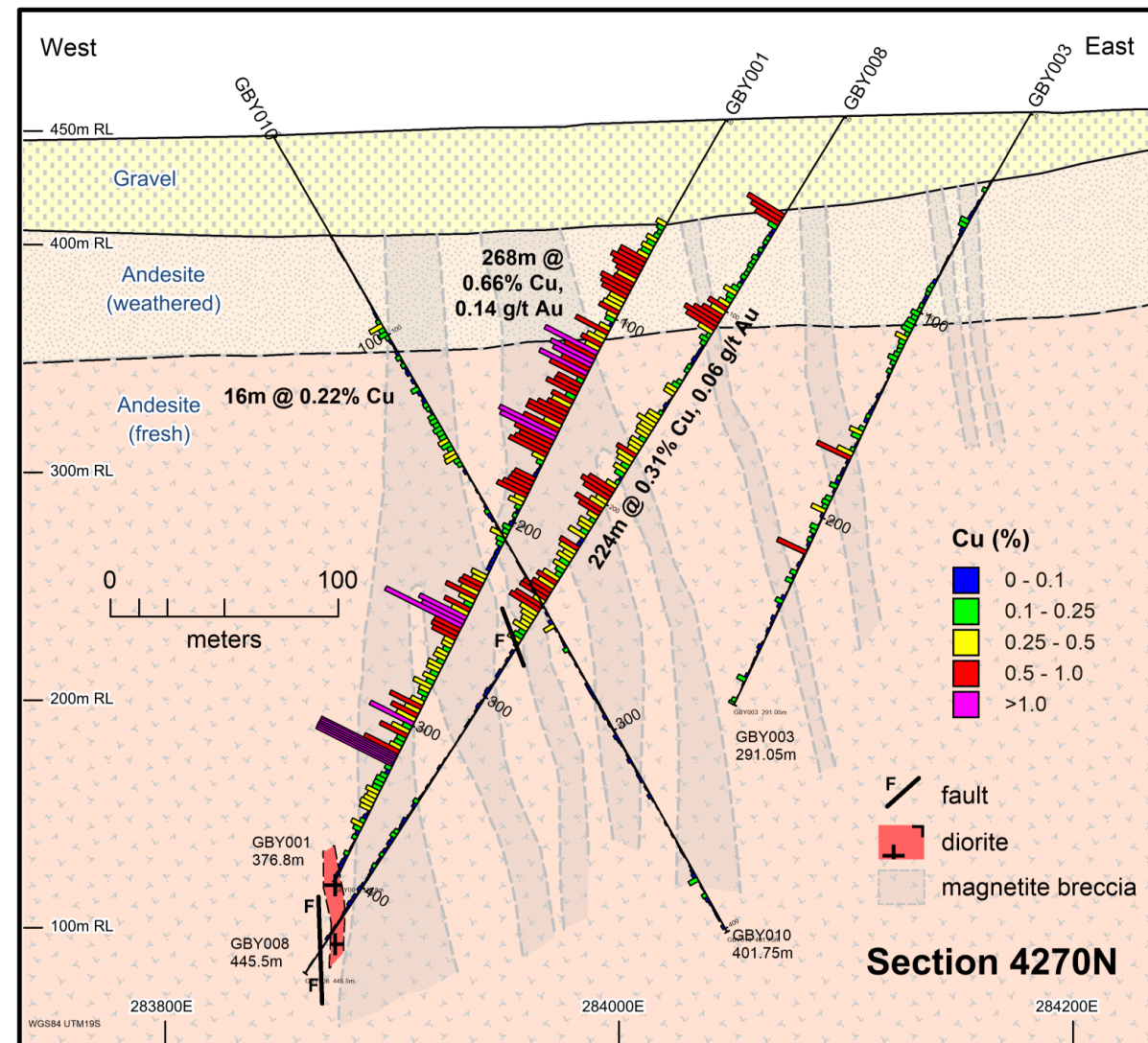
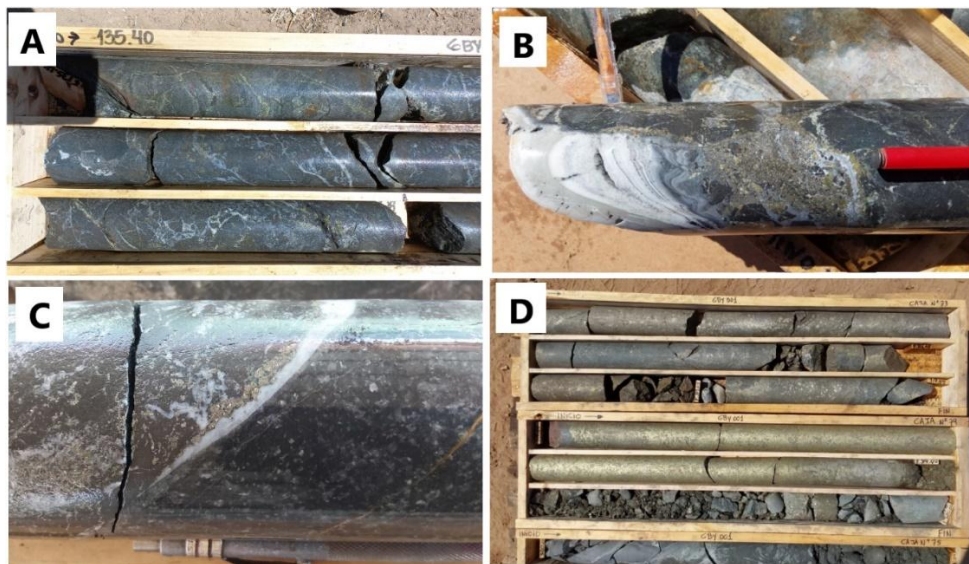
500

Gaby target drill section

Drill holes GBY001, GBY003, GBY008

GBY001 intersection:

268m at 0.66% copper and 0.14 g/t gold
incl. 90m at 1.02% copper and 0.23 g/t gold

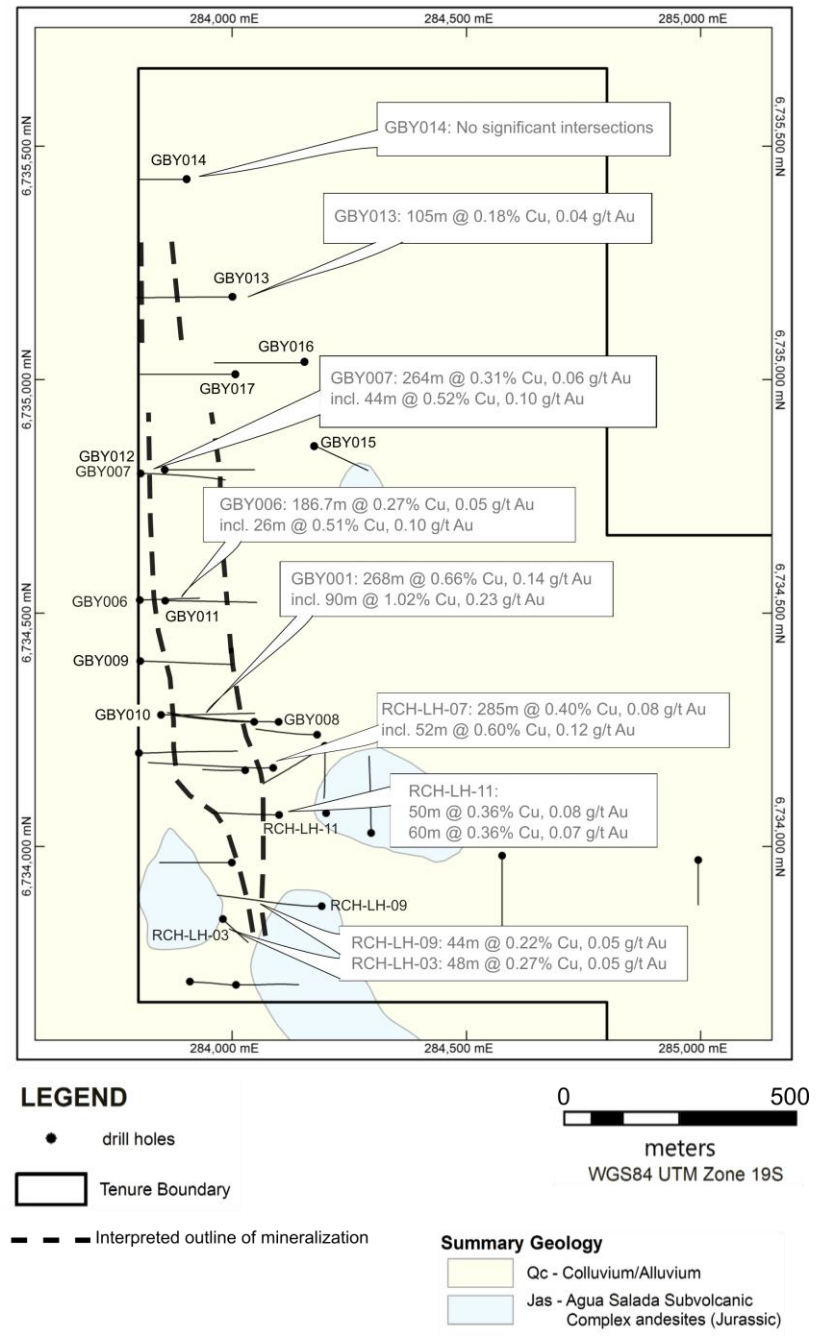


Gaby discovery

Copper-gold-cobalt-iron system

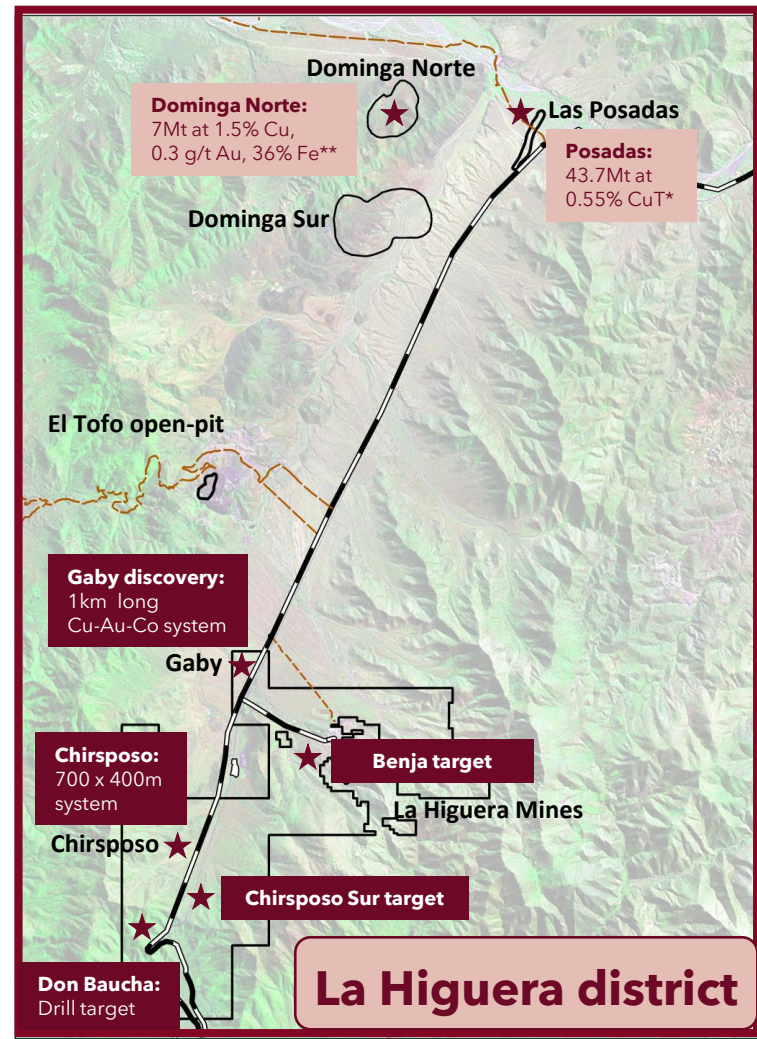
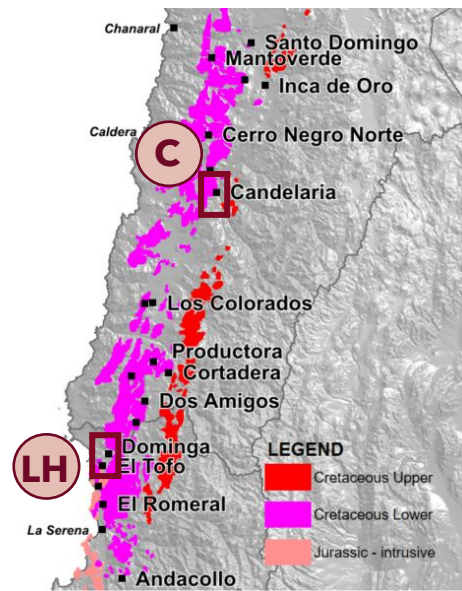
Large mineralized system delineated

- Mineralized system drilled over 1.4km strike length, open at depth.
- Delineated by 29 holes for 10,118m (incl. 11 historic holes)
- Preliminary metallurgical test work indicates good recoveries for copper-gold (85% and 65%, respectively, at a P₈₀ of 139µm) and magnetite (69.4% iron concentrate), with potential cobalt concentrate.
- Drilling planned to test additional potential:
 - i) large gaps of up to 270m in drilling along main trend
 - ii) off-trend IP anomaly in southeast



A foothold in an emerging IOCG district

The Chilean IOCG Belt hosts several districts with multiple deposits



Note: both district maps shown to same scale
 ¹ Estimate of cumulative past production and remaining reserves and Resources; Real et al. (2018)
 * *2012 NI 43-101 by Geovector (Armitage and Campbell). Weighted average grade of Indicated + Inferred Oxides and Sulphide at cut-off of 0.2% CuT
 ** Tamaya Resources (speculative estimate)
















Investment case

Peer comparison: significant re-rating potential

Selected peers with copper and/or IOCG projects in South America

Company	Main Project	Country	Project stage	Deposit Type	Metals	Exchange	Mkt Cap. (US\$ MM)*	
Filo	Filo del Sol		PFS	Porphyry	Cu-Au-Ag	TSX	3,248 ¹	Post resource definition peers
Far West	Santo Domingo		PEA + exploration	IOCG	Cu-Fe-Co	ex TSX-V	713 ²	
Pucobre	El Espino		BFS	IOCG	Cu & Au	Santiago	380 ³	
Marimaca	Marimaca		PEA + exploration	IOCG	Cu	TSX	372	
Avanco	Antas / Pedra Branca		Feasibility Study ³	IOCG	Cu & Au	ex ASX	323 ⁴	
ATEX	Valeriano		Mid stage exploration	Porphyry	Cu & Au	TSX-V	298	
SolGold	Alpala		PEA	Porphyry	Cu & Au	LSE	253	Exploration peers
Element 29	Elida		Early-stage exploration	Porphyry	Cu & Au	TSX-V	48	
Sunstone	El Palmar + Bramaderos		Early-stage exploration	Porphyry	Cu & Au	ASX	16	
Pampa	Piuquenes		Early-stage exploration	Porphyry	Cu & Au	TSXV	12	
Tribeca	La Higuera		Mid stage exploration	IOCG	Cu-Au-Co	TSX-V	13	

* Converted from local currency using USD:CAD = 1.44, USD:AUD = 1.63 and GBP:USD = 1.22 (Source for market caps and FX rates: Bloomberg on 10/01/25)

¹ Transaction value in announced sale to Lundin and BHP (closing expected Q1 2025)

² Transaction value when sold to Capstone Copper in April 2011. Company held other early-stage exploration assets.

³ Transaction value RCF announced a framework agreement to acquire a 23.68% stake in El Espino, in return for contributing US\$90M to cover part of the initial capital expenditure.

⁴ Development stage and transaction value when sold to OZ Minerals in August 2018. Company held other assets.

Delivering next generation of IOCG mines in Chile



Copper dominant with gold and possible cobalt credits

Tribeca Investment proposition

Copper is
critical

The world needs more
copper

New approaches are
needed

Differentiated
strategy

Science-led team

Actively managed portfolio

Upside
potential

Growing mineralized system
at La Higuera

Discovery potential at
Chiricuto

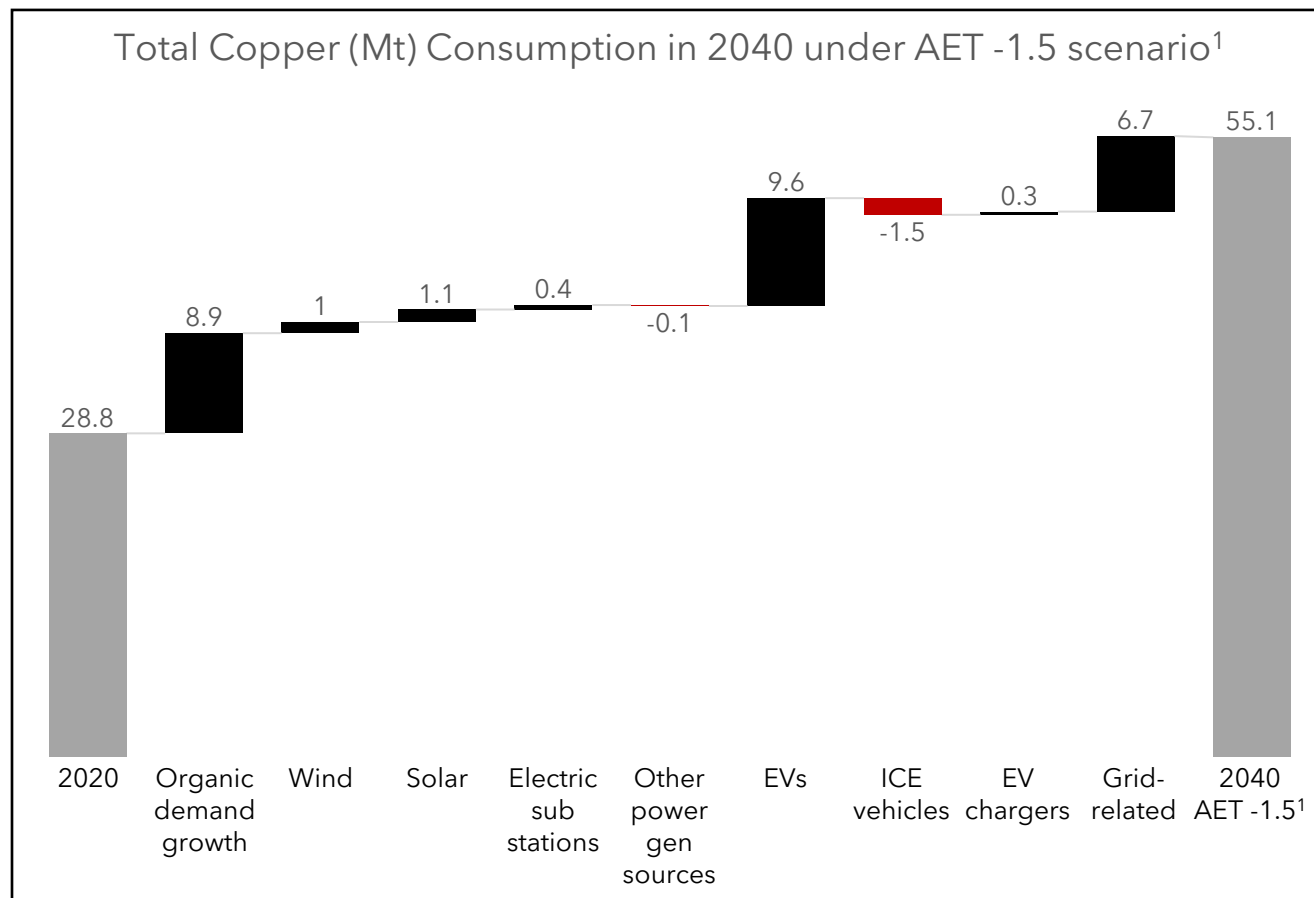


Appendices

Copper plays pivotal role in green energy transition



Near doubling of annual consumption expected by 2040



“
Demand for copper – already on a rising trend – is arguably **set to explode as the energy transition takes hold.**
 – Wood Mackenzie, Julian Kettle Sr. V.P. Metals and Mining Apr. 2021
 ”

Source: Wood Mackenzie “Copper’s critical role in achieving net zero” Oct 2022

¹ “AET-1.5” represents the scenario of an accelerated energy transition that assumes the world will decarbonize over the period to achieve global net zero emissions and limit the rise in temperature to 1.5 °C

Note: Organic demand growth refers to base case demand from other sectors (construction, appliances etc.) that have not been modelled under “AET-1.5” in this analysis.

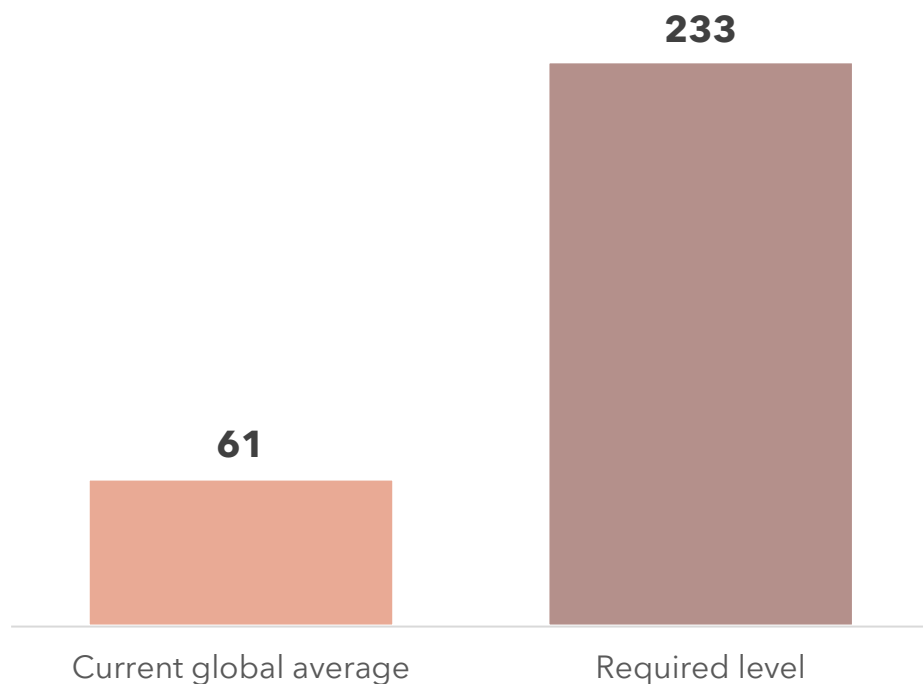
Economic development requires copper

Reaching UN development goals requires a ~4x increase in installed copper

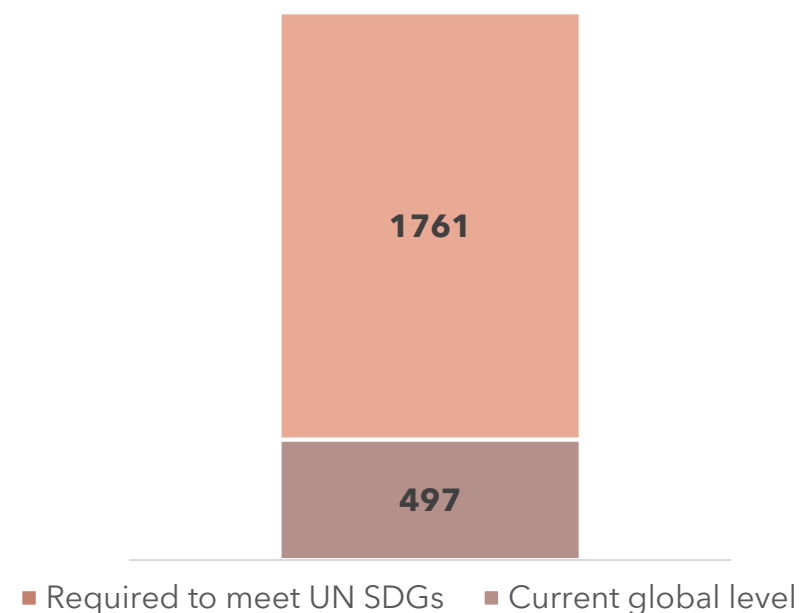
Significant increase in commodity supply required for decarbonisation and fair transition

Level of investment required implies sustained higher prices are needed

Copper (kg) per person¹



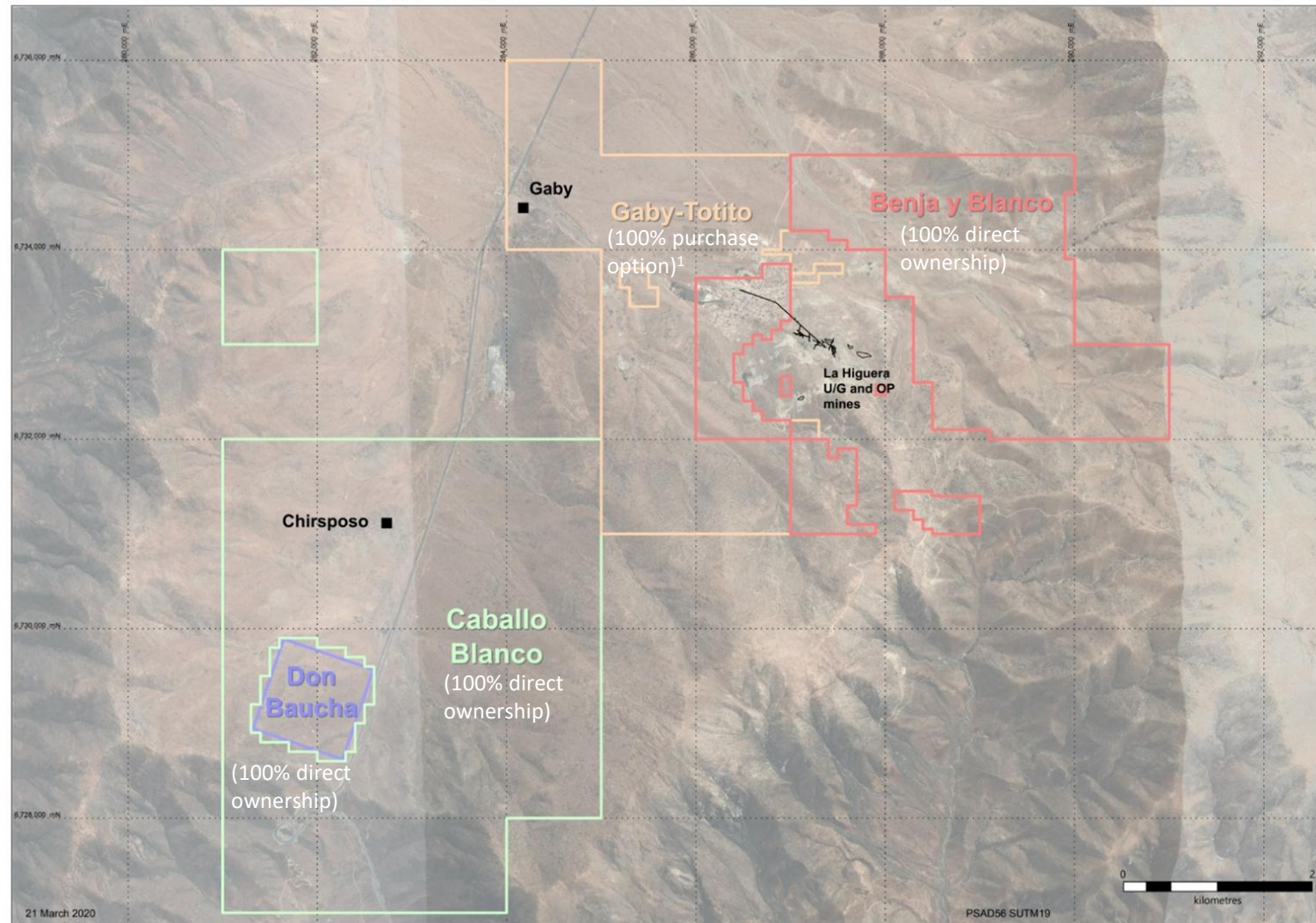
Global installed copper stock¹



¹ Source: Anglo American - Ruben Fernandes and Paul Gait presentation at the Deutsche Bank Virtual Copper CEO conference - 6 October, 2023 ([link](#)); Anglo Internal analysis using Wood Mackenzie, ICSG, WSA and UN data

La Higuera IOGC Project

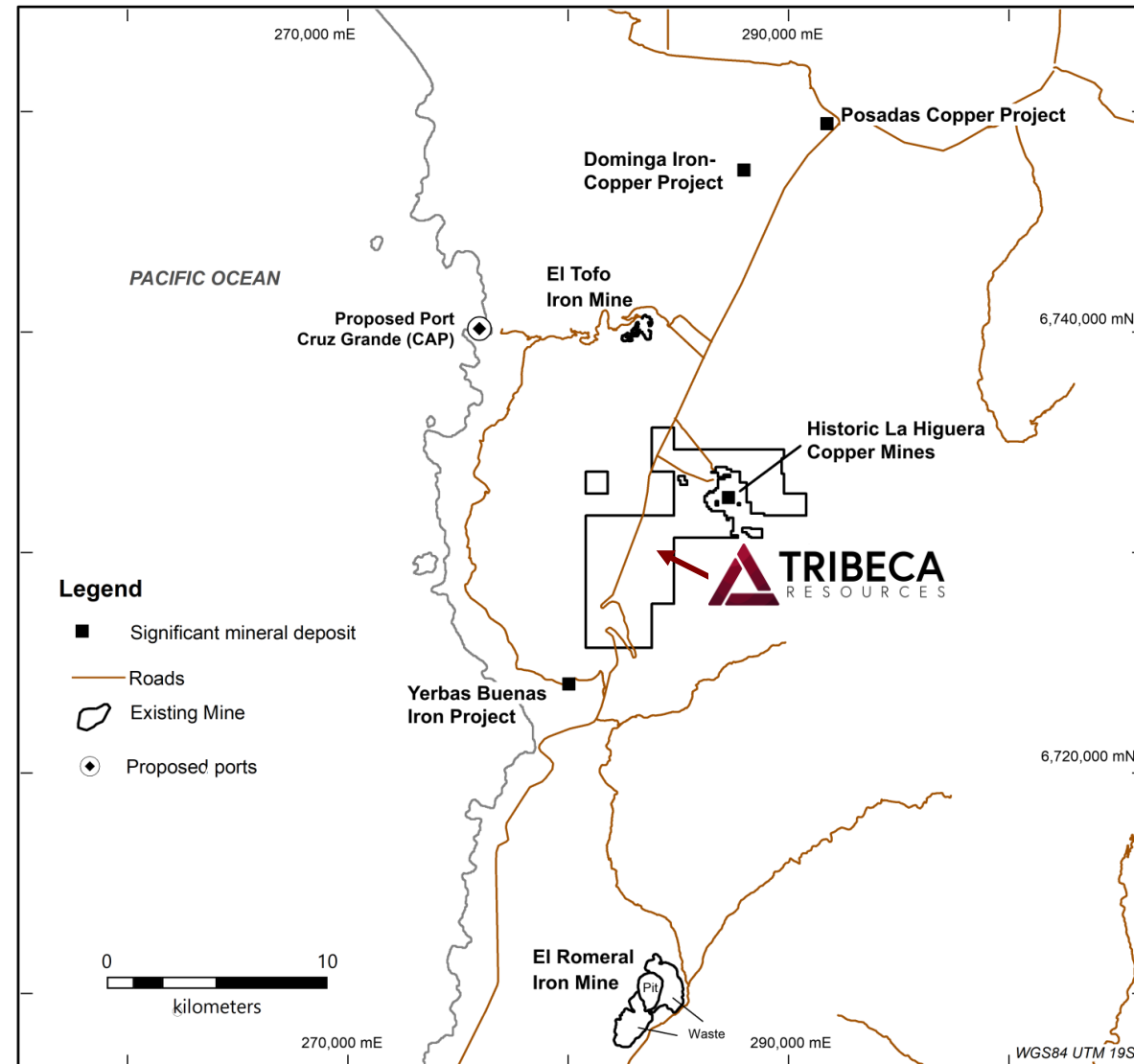
Mining concessions & underlying ownership



¹ US\$200k payment due in March 2024 and US\$1.8M payment due in March 2025. 5% Exploration Levy due on exploration work carried out during option period. 1% NSR royalty

The broader La Higuera district

Current and proposed infrastructure



Chirsposo target - 2023 drill results

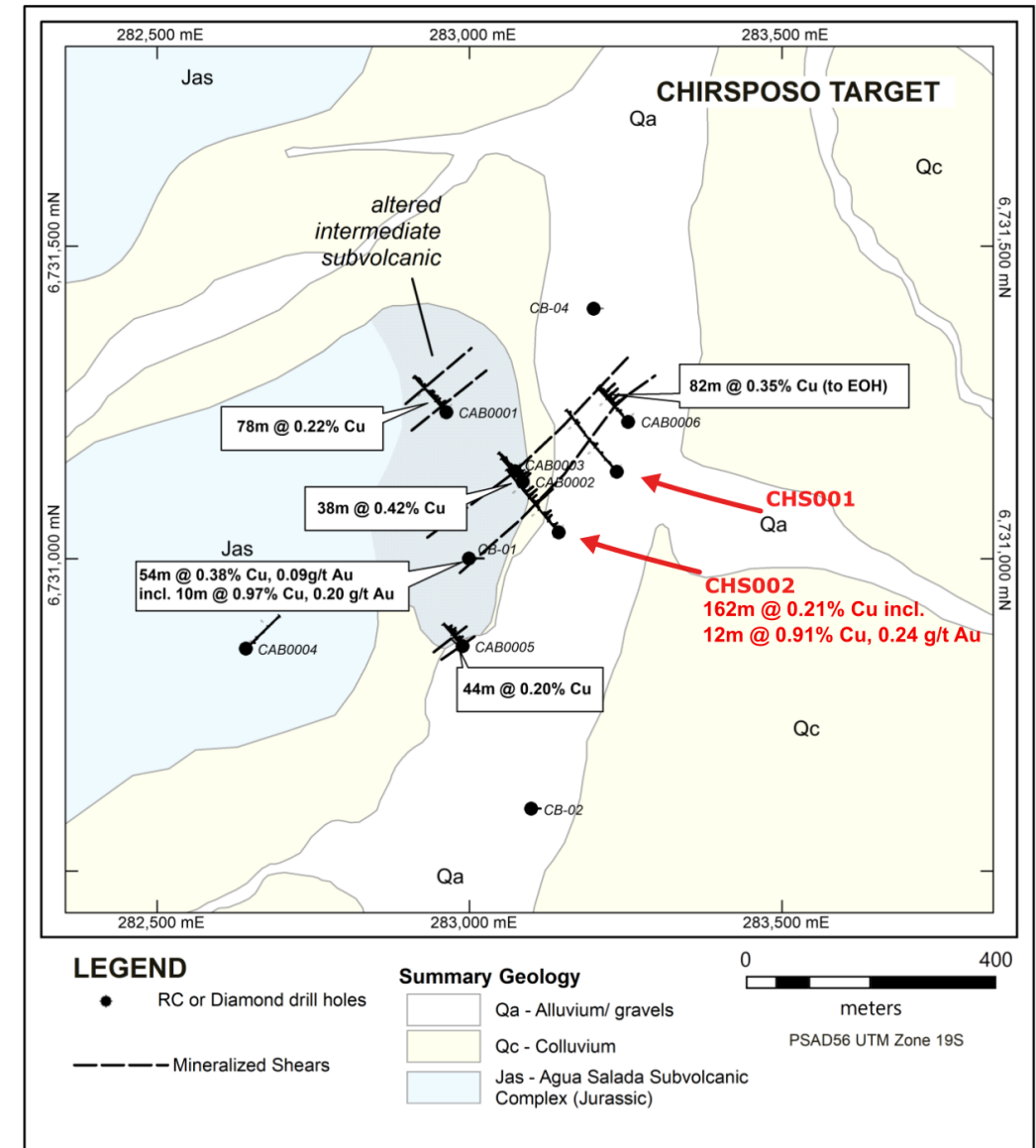
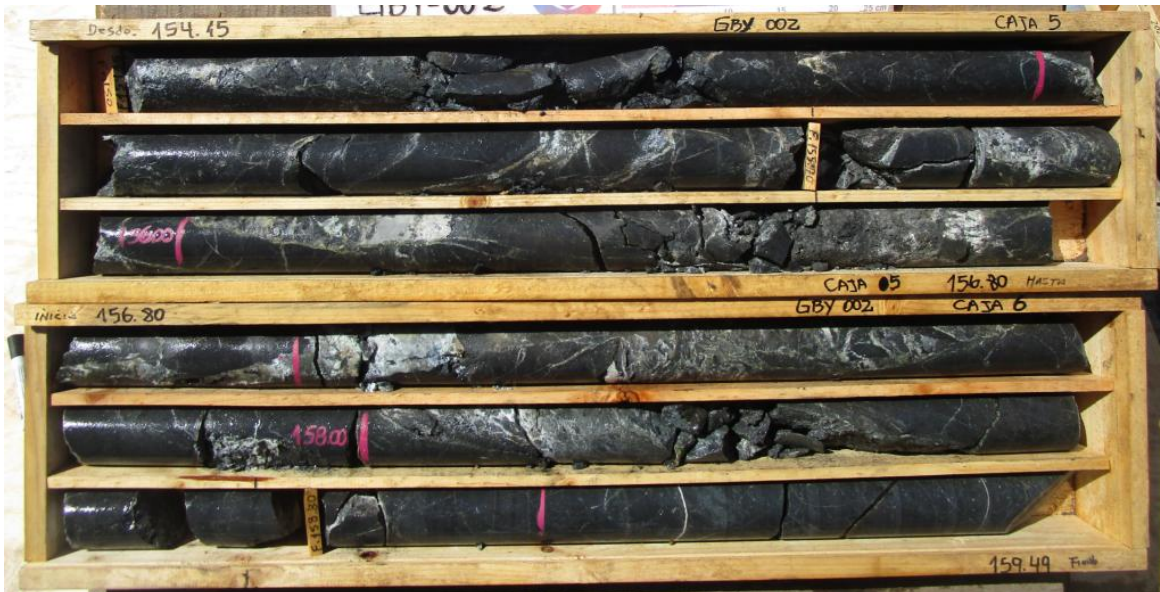
CHS001 and CHS002

CHS002

167m at 0.21% copper, including 12m @ 0.91% Cu, 0.24 g/t Au from 56m

Chirsposo represents a near surface copper-gold IOCG system with numerous shallow, thick, copper intersections

CHS002: 154-159m: 0.65% Cu, 0.25 g/t Au



Early-stage targets at Caballo Blanco

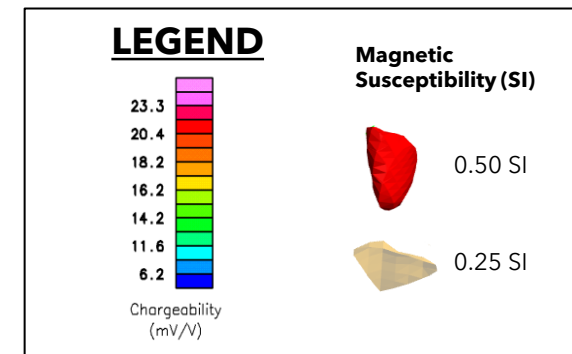
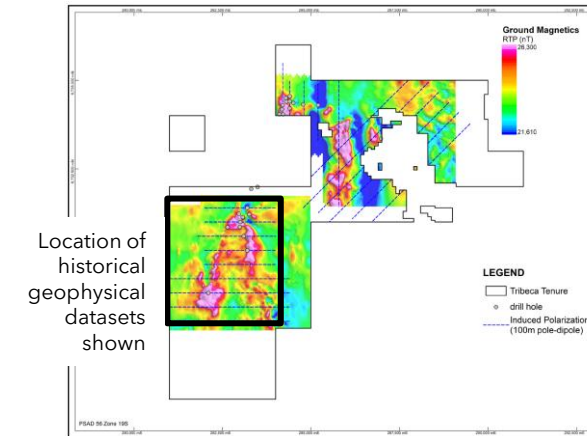
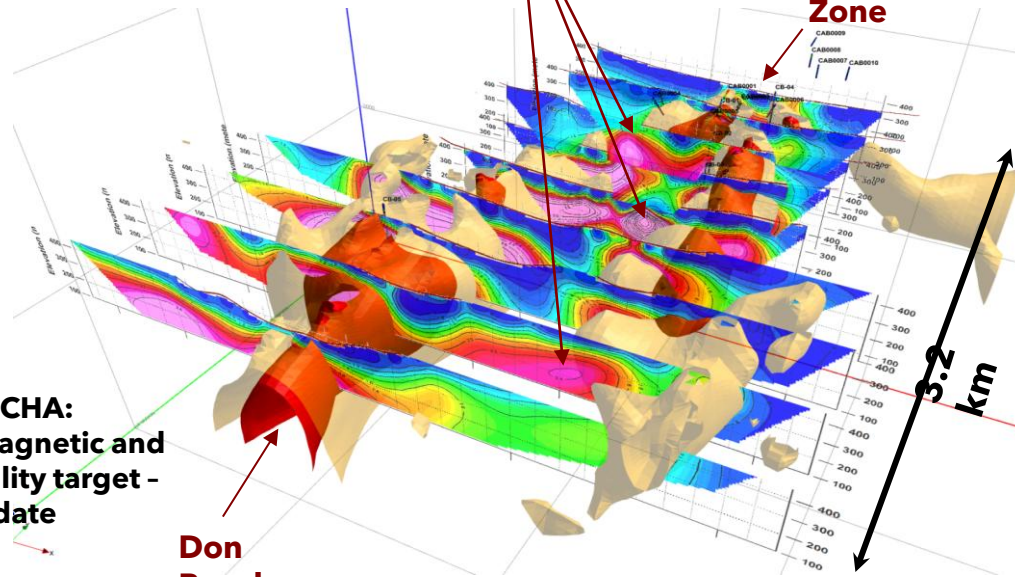
EARLY STAGE TARGETS: based on geophysical data

Additional geophysical targets

Chirposo Zone

DON BAUCHA: Intense magnetic and chargeability target - 1 hole to date

Don Baucha

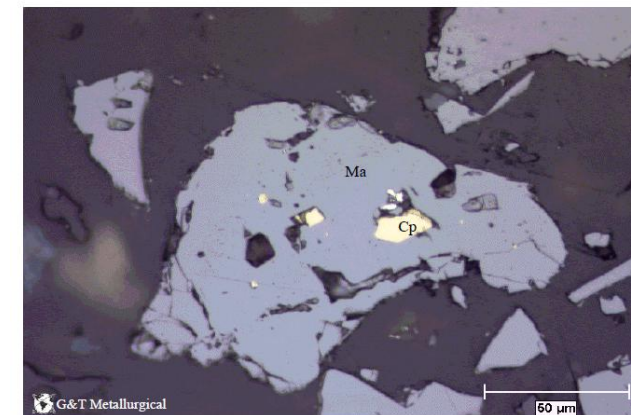


Metallurgical test work

- Metallurgical test work (G&T Metallurgical Services Ltd, 2006) on two composites of drill core with copper head grades of 0.75% Cu and 0.1% Cu
- Work indicated a copper and gold recovery of 85% and 65%, respectively, at a P_{80} of 139 μ m, with recoveries improving to **90% and 75% at a P_{80} of 87 μ m**
- Magnetic separation test work on the rougher copper tailing at the fine grind **produced a 69.4% Fe concentrate**
- A pyrite concentrate was floated from the rougher copper tailing, which had **a 0.4% Co content with 50% recovery**

Composite	Mineral Composition %			
	Chalcopyrite	Pyrite	Magnetite	Gangue
LH-6	2.3	12.7	56	29.3
LH-9	0.3	8.3	53	39.9

Composite	Assays –Percent or g/t							
	Cu	Co	Mo	Fe	Au	Ag	S	CuOx
LH-6	0.75	0.082	0.007	49.3	0.17	7	8.60	0.021
LH-9	0.10	0.027	0.025	40.8	0.03	2	3.09	0.004



Drill results obtained at La Higuera IOCG Project



Recent and historical drill intersections reported

HoleID	From (m)	To (m)	Downhole Interval (m)	Cu (%)	Au (g/t)	Co (ppm)	CuEq (%)*
Gaby - Tribeca Phase 1							
GBY001	52	320	268	0.66	0.14	330	0.74
GBY002	146	160	14	0.42	0.09	43	0.43
GBY003	158	172	14	0.29	0.07	106	0.32
GBY004	38	132	94	0.34	0.07	76	0.35
GBY005	270	290	20	0.42	0.09	320	0.48
GBY006	76	262.7	187	0.27	0.05	240	0.31
GBY007	88	352	264	0.31	0.06	142	0.33
Gaby - Tribeca Phase 2^							
GBY008	50	274	224	0.31	0.06	208	0.36
GBY009	64.9	238	173.1	0.14	0.03	158	0.18
GBY010	140	162	22	0.21	0.05	333	0.30
GBY011	74	196	122	0.21	0.04	159	0.25
GBY012	70	242	172	0.23	0.05	211	0.28
GBY013	331	436	105	0.18	0.04	97	0.20
GBY015	20	34	14	0.27	0.07	75	0.30
GBY015	96	118	22	0.24	0.06	59	0.27

HoleID	From (m)	To (m)	Downhole Interval (m)	Cu (%)	Au (g/t)	Co (ppm)	CuEq (%)*
Gaby - Historical drilling							
RCH-LH-03	0	48	48	0.27	0.05	244	N/R
RCH-LH-03	66	124	58	0.27	0.08	182	N/R
RCH-LH-06	196	232	36	0.66	0.14	328	N/R
RCH-LH-06	264	300	36	0.46	0.11	304	N/R
RCH-LH-07	100*	385	285	0.40	0.08	259	N/R
RCH-LH-07	408.1	439.3	31	0.24	0.06	315	N/R
RCH-LH-09	196	240	44	0.22	0.05	122	N/R
RCH-LH-11	60	110	50	0.36	0.07	141	N/R
RCH-LH-11	136	196	60	0.36	0.07	248	N/R
Chirsposo Tribeca Phase 1 and historical drilling							
CHS002	56	223	167	0.21	0.06	84	0.24
CAB0002	0	58	58	0.33	N/A	-	N/R
CAB0006	64	146	82	0.35	N/A	-	N/R
CB-01	122	176	54	0.38	0.09	-	N/R

Source: Tribeca Resources

* As reported in various news releases. Copper equivalent prices are calculated at prevailing spot metal prices at the time each news release is issued. "N/R" = not reported

^ Selected intersections from the 10 hole programme.

Recent M&A activity: Chile copper

Extensive M&A/investment activity involving Chilean copper assets despite tax regime and political uncertainties during 2022 and early 2023

Transactions involving Chilean copper deposits

Oct '24	Nittetsu & Camino jointly acquired 100% equity interest in Puquios from Denham Capital for C\$45M ¹
Aug '24	Codelco acquired 10% free carried equity interest in Teck's Quebrada Blanca mine from ENAMI for US\$520M
Jul '24	Capstone acquired 100% of Sierra Norte from Alxar (Copec) for US\$40M
Jul '24	Assore acquired 14.9% stake in Marimaca for US\$50M
Jul '24	Lundin Mining acquired additional 19% stake in Caserones for US\$350M ² to take interest to 70%
May '24	BHP bid for Anglo American whose portfolio includes Collahuasi (44%), Los Bronces (50.1%) and West Wall (50%)
Aug '23	Ecora acquired 0.25% open-pit and 0.12% UG NSR Royalty on Vizcachitas for US\$20M cash
Jul '23	Rio Tinto acquired 57.75% stake in Agua de la Falda (Jeronimo project) from Pan American Silver for US\$45.55M
Jul '23	Lundin Mining acquired 51% stake in Caserones from JX Nippon for US\$950M ³
Jul '23	Mitsubishi C\$20M strategic investment in Marimaca for 5% equity stake ⁴
Jul '23	Osisko Gold Royalties acquired 3% gold NSR Royalty on Costa Fuego from Hot Chilli for US\$15M cash
Apr '23	RCF US\$90M investment in Pucobre's El Espino project for 23.7% equity stake
Sep '22	Osisko Gold Royalties acquired 1% NSR Royalty on Marimaca for US\$15.5M cash
Sep '22	Goldfields C\$15M cash strategic investment in TORQ Resources (Santa Cecilia Au + Margarita Cu) ⁵
May '22	Las Cenizas acquired Franke mine from KGHM for US\$25M cash
Feb '22	South32 acquired 45% interest in Sierra Gora from Sumitomo for US\$1.55bn cash

Sources: public disclosure from parties involved in transactions

Note: Select list of transactions; not exhaustive

¹ Staged payments totalling C\$45M; linked to development milestones

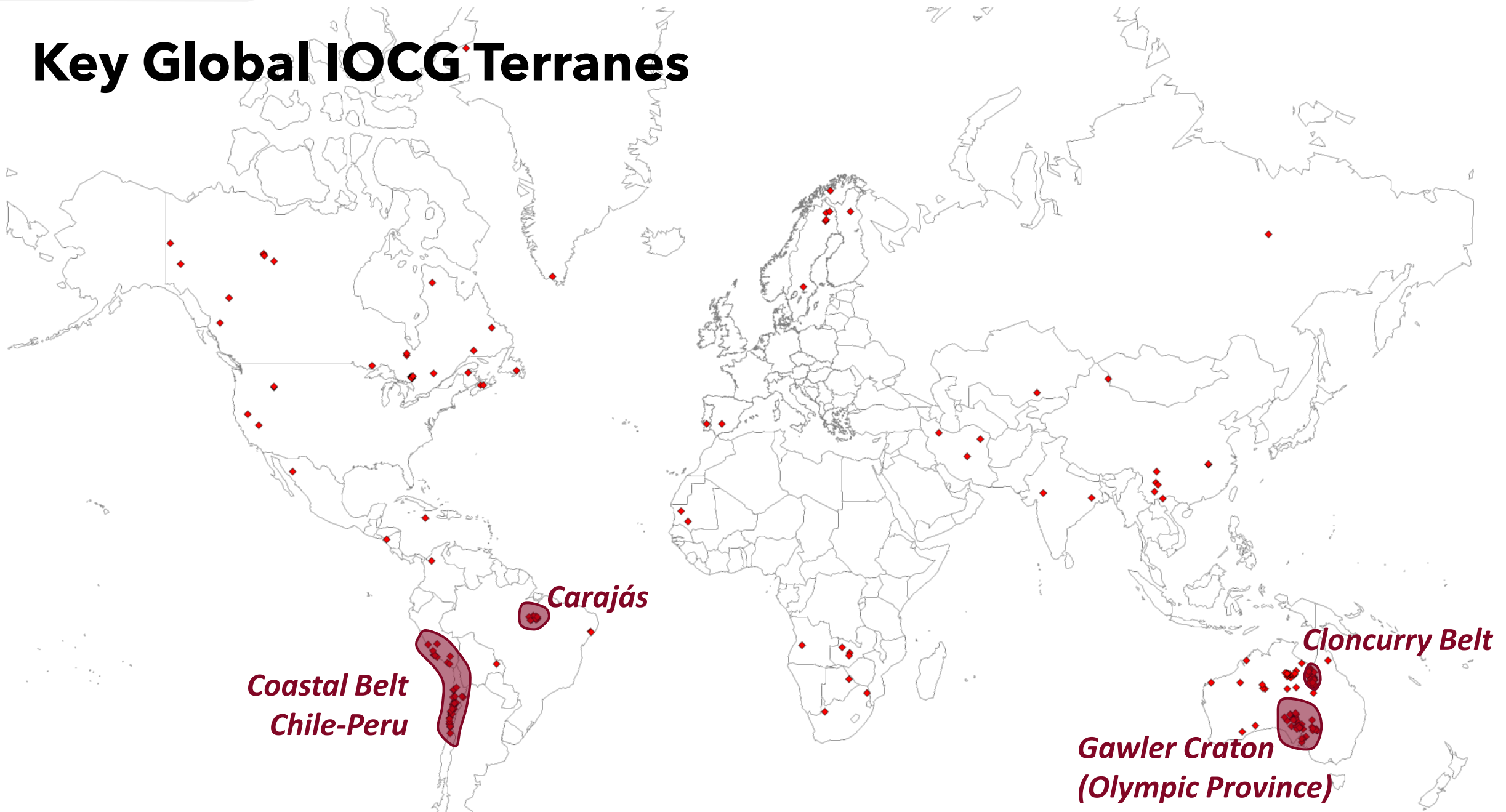
² Via exercise of purchase option obtained in July 2023 acquisition of 51% interest

³ US\$800M up-front cash payment, US\$150M deferred payment over 6 years; option to acquire further 19% for US\$350M

⁴ Shares acquired at a 11% premium to 20-day VWAP, giving Mitsubishi a 5.0% equity stake in Marimaca


⁵ Shares acquired at a 23% premium to 20-day VWAP, giving Goldfields a 15.05% equity stake in Torq

Key Global IOCG Terranes



Highly Aligned* Management Team

Exceptional track-record in Latin American copper, exploration, finance and M&A

Team Member	Background	Notable Experience
Dr. Paul Gow CEO, Director 	Geologist 25+ years experience PhD in IOCG deposits	Former Glencore GM Projects/Exploration Geologist with extensive experience in mineral exploration and project development. World-leading expertise with iron oxide copper-gold (IOCG) deposits - led exploration and development programs in all four major IOCG provinces. Formerly General Manager of Xstrata Copper's Frieda River project and Director Brazil Exploration based in Belo Horizonte/Carajás (led Pedra Branca discovery team - now in production)
Thomas Schmidt President, Director 	M&A / Finance 20+ years experience	Former Glencore GM Finance / M&A M&A professional with global experience and a strong focus on Latin America. Previously based in Santiago, Chile, Thomas originally joined Xstrata in London in 2003 as a member of the Corporate Development team, coming from J.P. Morgan. Prior to co-founding Tribeca Resources, he gained investing experience with Barclays Natural Resource Investments in Qatar. Formerly Xstrata General Manager Finance responsible for financial oversight of the Collahuasi and Antamina copper mine joint ventures in Chile and Peru respectively.
Nick DeMare CFO, Director 	Finance 30+ years experience	CFO and director of several Canadian listed junior explorers President and principal of Chase Management Ltd., a provider of administrative, management and financial services to a range of growth companies. For over 20 years, Mr. DeMare has assisted numerous companies in making the transition from the private to public stage and arranging and participating in equity and debt financing. Mr. DeMare is currently a director and/or officer of a number of public companies listed on the Toronto Stock Exchange and the TSX Venture Exchange. Mr. DeMare was previously with PWC.

* Management holds a combined 32% equity interest in the company



MOUNT ISA
MINES



J.P.Morgan

Experienced Independent Directors

Diverse capabilities, with deep mining, investing and company-building experience

Team Member	Background	Notable Experience
<p>Luis Tondo Director, Compensation & Governance Committee Chair</p> 	<p>Metallurgy & engineering 30+ years experience</p>	<p>Mining Engineer with extensive operating background in Latam Junior and major company operating experience across Latin America. Former COO and CEO, President & Director at Marimaca Copper (TSX) 2017 - 2021. Earlier COO at three mid-tier copper and gold producers in Chile, Uruguay and Brazil. Developed multi-million-dollar capital projects for Kinross Gold in Brazil and Chile, and 16 years in operations roles with Rio Tinto in Brazil. Fellow of AUSIMM and a QP NI 43-101 purposes for Mineral Projects. Bachelor's from Universidade Federal do Rio Grande do Sul; Master of Engineering Science from the University of Queensland; and an MBA from the Fundacao Dom Cabral.</p>
<p>Derrick Weyrauch Director, Audit Committee Chair</p> 	<p>Finance, restructuring & company building 30+ years experience</p>	<p>CPA with finance, M&A, risk management, corporate restructuring and turnaround experience Experienced corporate director and executive of listed issuers spanning exploration, development and operating mining companies including Chile, Peru Brazil, Finland and Canada. Currently CEO & Director of Palladium One Mining Inc., Chairman of Nortec Minerals Corp., Co-founder and former director of Magna Mining Corp. Other past directorships include Cabral Gold Inc, Eco Oro Minerals Corp., Jaguar Mining Inc. and Banro Corp. CPA CA designation obtained with KPMG LLP; member of CPA Canada and the Institute of Corporate Directors; Honours B.A. in Economics from York University.</p>

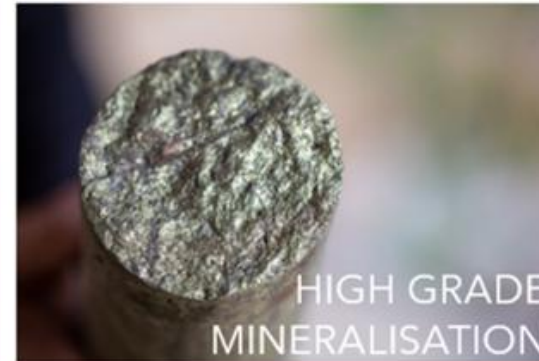








Photo Gallery: La Higuera IOCG Project



Statutory Rights of Action



The following summary of the statutory rights of action for damages or rescission will apply to a Canadian purchaser of securities in the event that this Presentation is deemed to be an offering memorandum pursuant to securities legislation in the applicable province or territory of Canada in connection with the sale of securities. In certain circumstances, purchasers resident in certain provinces of Canada are provided with a remedy for rescission or damages, or both, in addition to any other right they may have at law, where a presentation and any amendment to it contains a misrepresentation. Where used herein, “misrepresentation” means an untrue statement of a material fact or an omission to state a material fact that is required to be stated or that is necessary to make any statement not misleading in light of the circumstances in which it was made. These remedies, or notice with respect to these remedies, must be exercised or delivered, as the case may be, by the purchaser within the time limits prescribed by applicable securities legislation.

The following summary is subject to the express provisions of the applicable securities laws, regulations and rules, and reference is made thereto for the complete text of such provisions. Such provisions may contain limitations and statutory defenses not described hereon which the Company and other applicable parties may rely. Purchasers should refer to the applicable provisions of the securities legislation of their province for the particulars of these rights or consult with a legal adviser.

The following is a summary of rights of rescission or damages, or both, available to purchasers resident in the provinces of Ontario, New Brunswick, Nova Scotia and Saskatchewan. If there is a misrepresentation herein and you are a purchaser under securities legislation in Ontario, New Brunswick, Nova Scotia and Saskatchewan you have, without regard to whether you relied upon the misrepresentation, a statutory right of action for damages, or while still the owner of the securities, for rescission against the Company. This statutory right of action is subject to the following: (a) if you elect to exercise the right of action for rescission, you will have no right of action for damages against the Company; (b) except with respect to purchasers resident in Nova Scotia, no action shall be commenced to enforce a right of action for rescission after 180 days from the date of the transaction that gave rise to the cause of action; (c) no action shall be commenced to enforce a right of action for damages after the earlier of (i) 180 days (with respect to purchasers resident in Ontario) or one year (with respect to purchasers resident in Saskatchewan and New Brunswick) after you first had knowledge of the facts giving rise to the cause of action and (ii) three years (with respect to purchasers resident in Ontario) or six years (with respect to purchasers resident in Saskatchewan and New Brunswick) after the date of the transaction that gave rise to the cause of action; (d) with respect to purchasers resident in Nova Scotia, no action shall be commenced to enforce a right of action for rescission or damages after 120 days from the date on which payment for the securities was made by you; (e) the Company will not be liable if it proves that you purchased the securities with knowledge of the misrepresentation; (f) in the case of an action for damages, the Company will not be liable for all or any portion of the damages that it proves do not represent the depreciation in value of the securities as a result of the misrepresentations; (g) in no case will the amount recoverable in such action exceed the price at which the securities were sold to you; and (h) with respect to purchasers resident in Saskatchewan or Nova Scotia, the court may deny the right to recover a contribution where, in all the circumstances of the case, it is satisfied that to permit recovery of a contribution would not be just and equitable. The foregoing is a summary only and is subject to the express provisions of the Securities Act (Ontario), the Securities Act (New Brunswick), the Securities Act (Nova Scotia) and the Securities Act (Saskatchewan), and the rules, regulations and other instruments thereunder, and reference is made to the complete text of such provisions contained therein. Such provisions may contain limitations and statutory defenses on which the Company may rely.

In Manitoba, the Securities Act (Manitoba), in Newfoundland and Labrador, the Securities Act (Newfoundland and Labrador), in Prince Edward Island, the Securities Act (PEI), in Yukon, the Securities Act (Yukon), in Nunavut, the Securities Act (Nunavut) and in the Northwest Territories, the Securities Act (Northwest Territories) provide a statutory right of action for damages or rescission to purchasers resident in Manitoba, Newfoundland and Labrador, PEI, Yukon, Nunavut and Northwest Territories respectively, in circumstances where this document or an amendment hereto contains a misrepresentation, which rights are similar, but not identical, to the rights available to Ontario purchasers.

The statutory rights of action described above is in addition to and without derogation from any other right or remedy at law.



TSXV: **TRBC**



www.tribecaresources.com | admin@tribecaresources.com